

# COMUNE DI SAN PIER NICETO

(PROVINCIA DI MESSINA) UFFICIO DEL GENIO CIVILE  
- MESSINA -

COMUNE DI SAN PIER NICETO

(PROV. DI MESSINA)

"Copia conforme all'originale, adottato con delibera  
Commissariale n.3 del 27.01.2005 e allegato e parte  
integrante dell'atto."

San Pier Niceto li

06 LUG. 2005

IL SEGRETARIO COMUNALE  
Dott.ssa Cicerò Vincenza

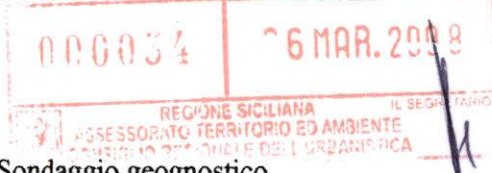


L'INGEGNERE CAPO  
dir. sup. ing. F. Rigano

## PIANO REGOLATORE GENERALE

### INDAGINI GEOGNOSTICHE

IL RESPONSABILE DEL PROCEDIMENTO  
geom. Francesco Maio



#### Centro

- Sondaggio geognostico.....S.1  
.....S.2  
.....S.3  
.....S.4  
.....S.5  
.....S.6  
Traversa sismica.....T.2  
.....T.3  
Prova penetrometrica dinamica .....Din.1  
.....Din.2  
.....Din.3  
.....Din.4



#### San Pier Marina

- Prova penetrometrica dinamica .....Din.1

Handwritten signature: Hans Franz



Indagini geognostiche

Centro

Sondaggi meccanici

$S_1 - S_2$

Progetto per la costruzione di un campo di  
calcetto in adiacenza al campo di calcio

Località Fornace

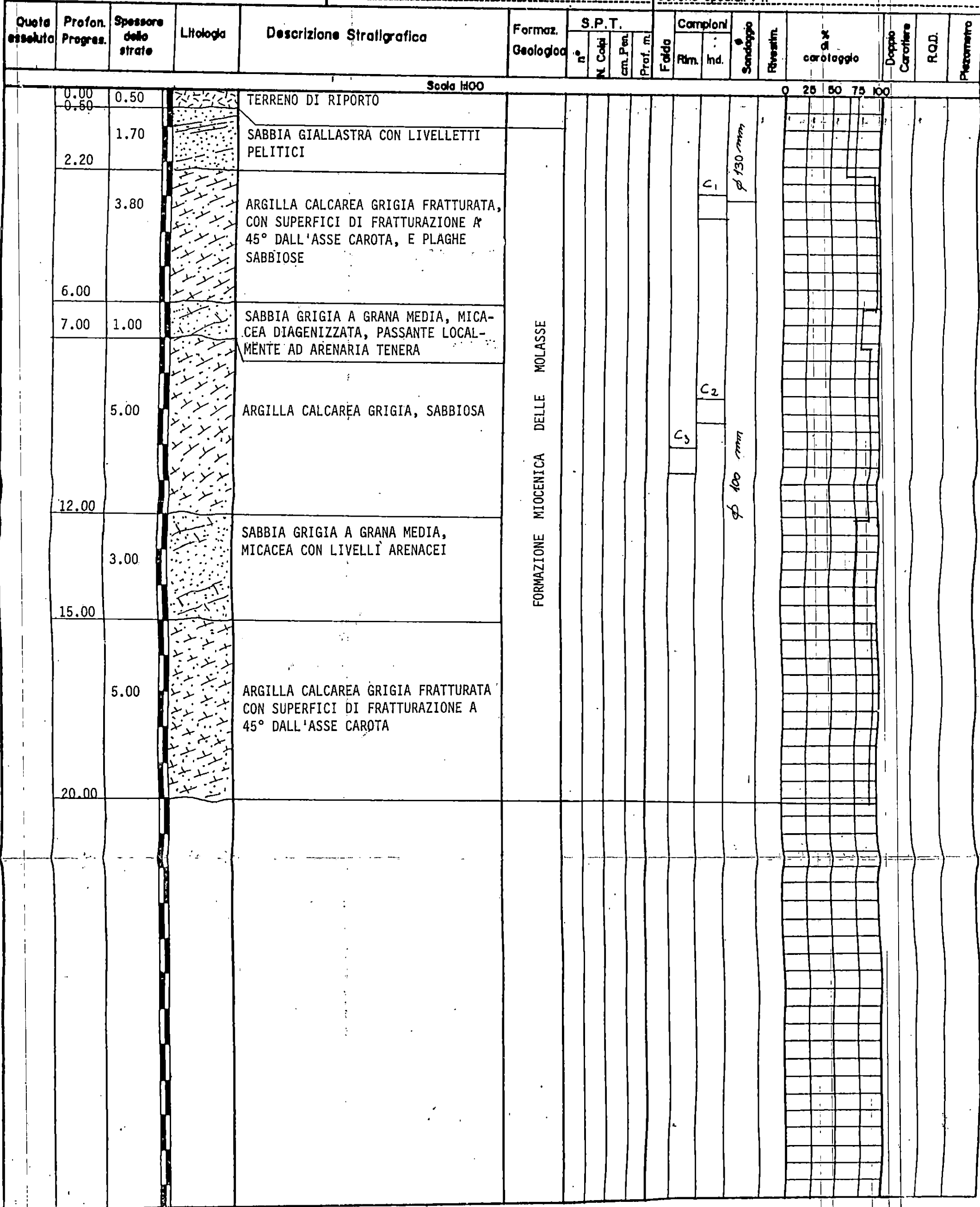


1. 1. The first part of the document is a title page.  
 2. 2. The second part of the document is a table of contents.  
 3. 3. The third part of the document is a list of references.  
 4. 4. The fourth part of the document is a list of figures.  
 5. 5. The fifth part of the document is a list of tables.  
 6. 6. The sixth part of the document is a list of appendices.  
 7. 7. The seventh part of the document is a list of footnotes.  
 8. 8. The eighth part of the document is a list of references.  
 9. 9. The ninth part of the document is a list of figures.  
 10. 10. The tenth part of the document is a list of tables.  
 11. 11. The eleventh part of the document is a list of appendices.  
 12. 12. The twelfth part of the document is a list of footnotes.  
 13. 13. The thirteenth part of the document is a list of references.  
 14. 14. The fourteenth part of the document is a list of figures.  
 15. 15. The fifteenth part of the document is a list of tables.  
 16. 16. The sixteenth part of the document is a list of appendices.  
 17. 17. The seventeenth part of the document is a list of footnotes.  
 18. 18. The eighteenth part of the document is a list of references.  
 19. 19. The nineteenth part of the document is a list of figures.  
 20. 20. The twentieth part of the document is a list of tables.  
 21. 21. The twenty-first part of the document is a list of appendices.  
 22. 22. The twenty-second part of the document is a list of footnotes.  
 23. 23. The twenty-third part of the document is a list of references.  
 24. 24. The twenty-fourth part of the document is a list of figures.  
 25. 25. The twenty-fifth part of the document is a list of tables.  
 26. 26. The twenty-sixth part of the document is a list of appendices.  
 27. 27. The twenty-seventh part of the document is a list of footnotes.  
 28. 28. The twenty-eighth part of the document is a list of references.  
 29. 29. The twenty-ninth part of the document is a list of figures.  
 30. 30. The thirtieth part of the document is a list of tables.  
 31. 31. The thirty-first part of the document is a list of appendices.  
 32. 32. The thirty-second part of the document is a list of footnotes.  
 33. 33. The thirty-third part of the document is a list of references.  
 34. 34. The thirty-fourth part of the document is a list of figures.  
 35. 35. The thirty-fifth part of the document is a list of tables.  
 36. 36. The thirty-sixth part of the document is a list of appendices.  
 37. 37. The thirty-seventh part of the document is a list of footnotes.  
 38. 38. The thirty-eighth part of the document is a list of references.  
 39. 39. The thirty-ninth part of the document is a list of figures.  
 40. 40. The fortieth part of the document is a list of tables.  
 41. 41. The forty-first part of the document is a list of appendices.  
 42. 42. The forty-second part of the document is a list of footnotes.  
 43. 43. The forty-third part of the document is a list of references.  
 44. 44. The forty-fourth part of the document is a list of figures.  
 45. 45. The forty-fifth part of the document is a list of tables.  
 46. 46. The forty-sixth part of the document is a list of appendices.  
 47. 47. The forty-seventh part of the document is a list of footnotes.  
 48. 48. The forty-eighth part of the document is a list of references.  
 49. 49. The forty-ninth part of the document is a list of figures.  
 50. 50. The fiftieth part of the document is a list of tables.  
 51. 51. The fifty-first part of the document is a list of appendices.  
 52. 52. The fifty-second part of the document is a list of footnotes.  
 53. 53. The fifty-third part of the document is a list of references.  
 54. 54. The fifty-fourth part of the document is a list of figures.  
 55. 55. The fifty-fifth part of the document is a list of tables.  
 56. 56. The fifty-sixth part of the document is a list of appendices.  
 57. 57. The fifty-seventh part of the document is a list of footnotes.  
 58. 58. The fifty-eighth part of the document is a list of references.  
 59. 59. The fifty-ninth part of the document is a list of figures.  
 60. 60. The sixtieth part of the document is a list of tables.  
 61. 61. The sixty-first part of the document is a list of appendices.  
 62. 62. The sixty-second part of the document is a list of footnotes.  
 63. 63. The sixty-third part of the document is a list of references.  
 64. 64. The sixty-fourth part of the document is a list of figures.  
 65. 65. The sixty-fifth part of the document is a list of tables.  
 66. 66. The sixty-sixth part of the document is a list of appendices.  
 67. 67. The sixty-seventh part of the document is a list of footnotes.  
 68. 68. The sixty-eighth part of the document is a list of references.  
 69. 69. The sixty-ninth part of the document is a list of figures.  
 70. 70. The seventieth part of the document is a list of tables.  
 71. 71. The seventy-first part of the document is a list of appendices.  
 72. 72. The seventy-second part of the document is a list of footnotes.  
 73. 73. The seventy-third part of the document is a list of references.  
 74. 74. The seventy-fourth part of the document is a list of figures.  
 75. 75. The seventy-fifth part of the document is a list of tables.  
 76. 76. The seventy-sixth part of the document is a list of appendices.  
 77. 77. The seventy-seventh part of the document is a list of footnotes.  
 78. 78. The seventy-eighth part of the document is a list of references.  
 79. 79. The seventy-ninth part of the document is a list of figures.  
 80. 80. The eightieth part of the document is a list of tables.  
 81. 81. The eighty-first part of the document is a list of appendices.  
 82. 82. The eighty-second part of the document is a list of footnotes.  
 83. 83. The eighty-third part of the document is a list of references.  
 84. 84. The eighty-fourth part of the document is a list of figures.  
 85. 85. The eighty-fifth part of the document is a list of tables.  
 86. 86. The eighty-sixth part of the document is a list of appendices.  
 87. 87. The eighty-seventh part of the document is a list of footnotes.  
 88. 88. The eighty-eighth part of the document is a list of references.  
 89. 89. The eighty-ninth part of the document is a list of figures.  
 90. 90. The ninetieth part of the document is a list of tables.  
 91. 91. The ninety-first part of the document is a list of appendices.  
 92. 92. The ninety-second part of the document is a list of footnotes.  
 93. 93. The ninety-third part of the document is a list of references.  
 94. 94. The ninety-fourth part of the document is a list of figures.  
 95. 95. The ninety-fifth part of the document is a list of tables.  
 96. 96. The ninety-sixth part of the document is a list of appendices.  
 97. 97. The ninety-seventh part of the document is a list of footnotes.  
 98. 98. The ninety-eighth part of the document is a list of references.  
 99. 99. The ninety-ninth part of the document is a list of figures.  
 100. 100. The hundredth part of the document is a list of tables.

**Data:** MAGGIO 1993

**Cassette Catalogatrici : n° 5**

**Corona speciali : n°**





Indagini geognostiche

Centro

Sondaggi meccanici

$S_3 - S_4 - S_5$

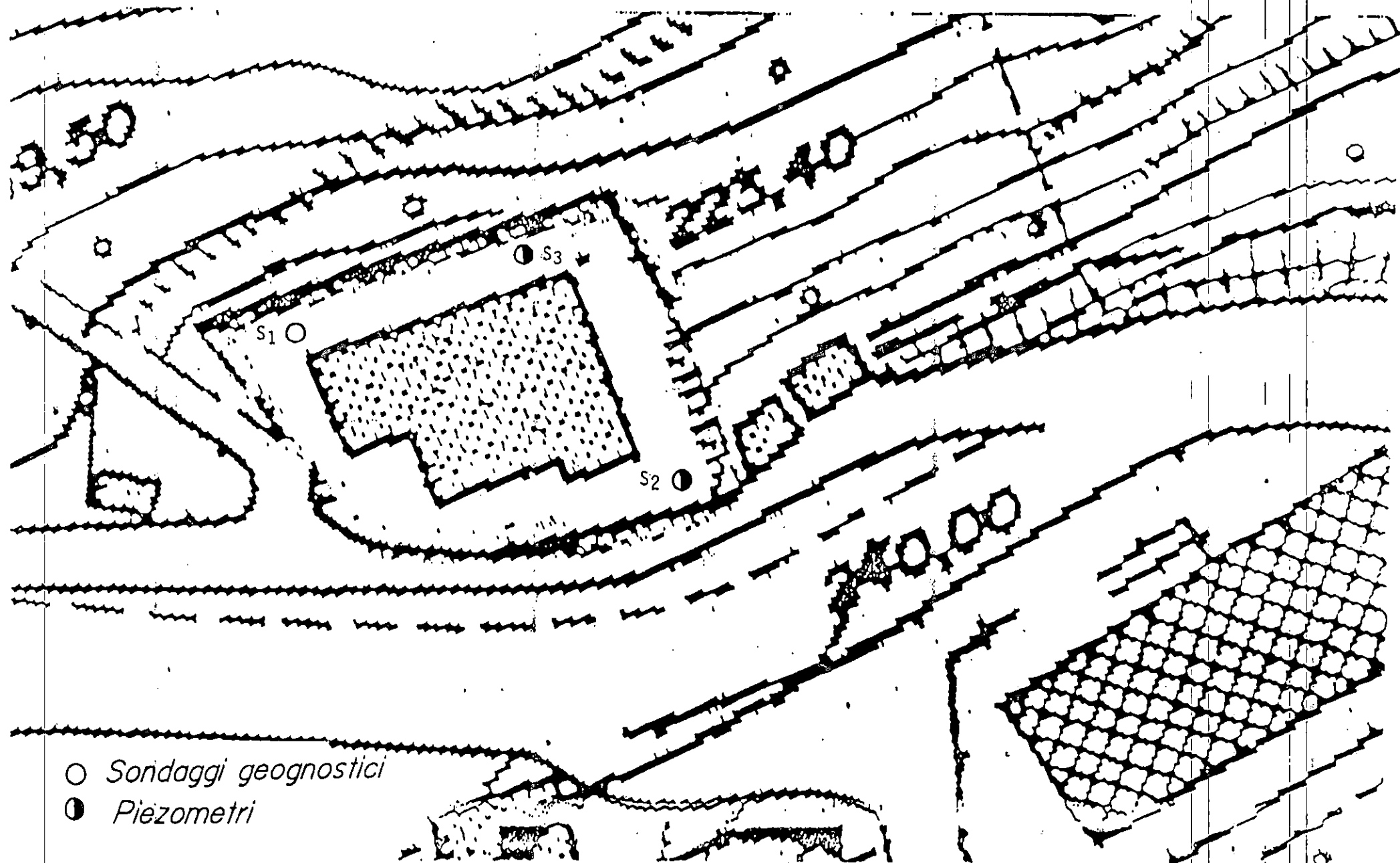
Progetto di sistemazione della scuola materna

Località Longo



*Planimetria con ubicazione sondaggi*

*scala 1:500*



**Geo Sicilia - Via Liberta' n.90 - 98030 S.Domenica Vittoria (ME)**

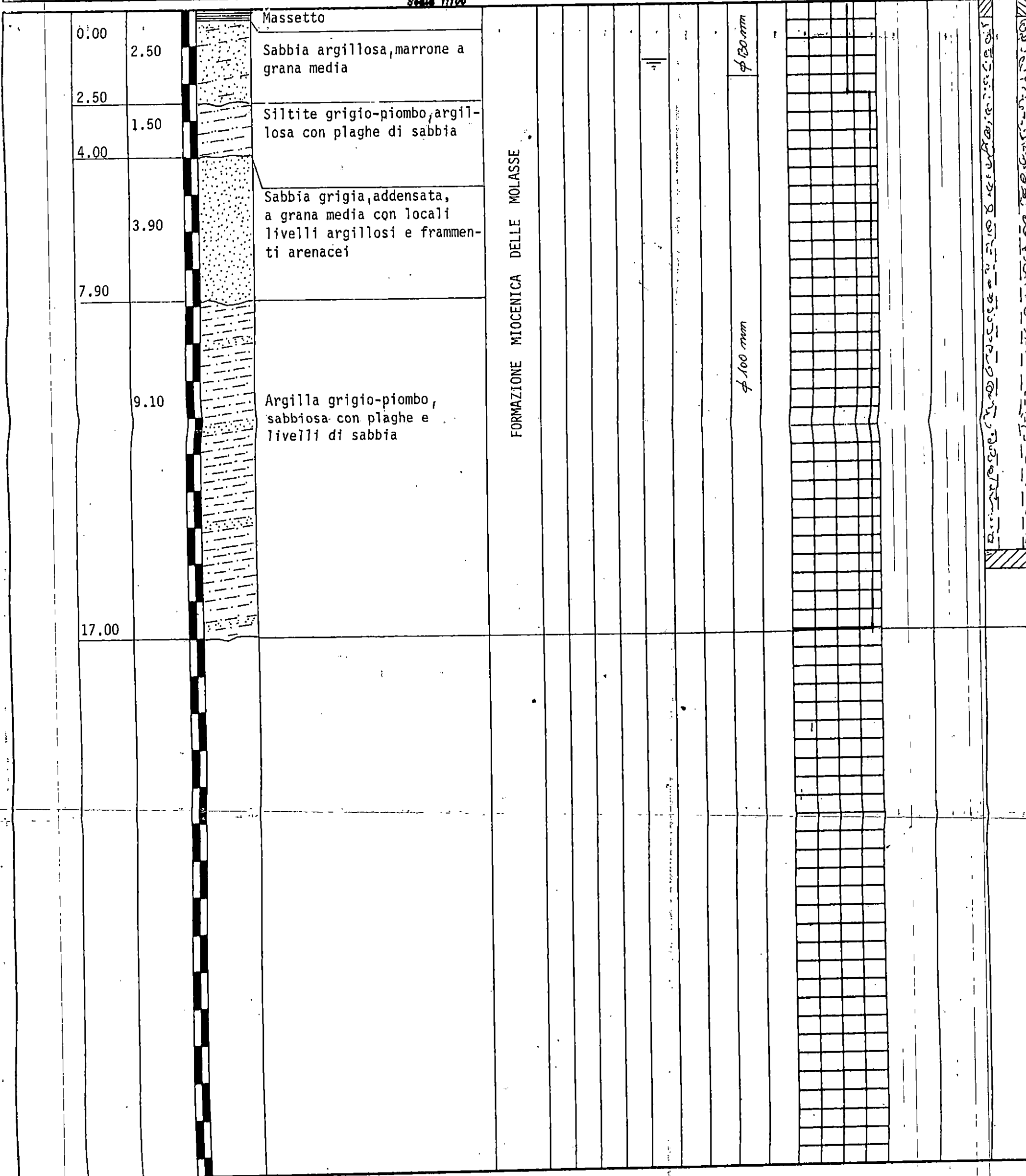
<b>Committente:</b> Comune di San Pier Niceto	<b>Profondita' totale:</b> ml 19.00	<b>Rivestimento:</b> ml
<b>Cantiere:</b> Scuola materna "Centro"	<b>S.P.T.:</b> n° 3	<b>Doppio carotiere:</b> ml
<b>Sondaggio:</b> S <sub>1</sub>	<b>Camp. indisturbati:</b> n° 1	<b>Piezometro:</b> ml
	<b>Camp. rimaneggiati:</b> n°	<b>Inclinometro:</b> ml
<b>Data:</b> Marzo 1995	<b>Cassette catalogatrici:</b> n° 3	<b>Corone speciali:</b> n°

[illegible]



**Geo Sicilia - Via Liberta' n.90 - 98030 S.Domenica Vittoria (ME)**

<b>Committente:</b> Comune di San Pier Niceto	<b>Profondita' totale:</b> ml 17.00	<b>Rivestimento:</b> ml
<b>Cantiere:</b> Scuola Materna "Centro"	<b>S.P.T.:</b> n°	<b>Doppio carotiere:</b> ml
<b>Sondaggio:</b> S2	<b>Camp. indisturbati:</b> n°	<b>Piesometro:</b> a tubo aperto ml 15.00
<b>Data:</b> Marzo 1995	<b>Camp. rimaneggiati:</b> n°	<b>Inclinometro:</b> ml
	<b>Cassette catalogatrici:</b> n° 4	<b>Corone episcopali:</b> n°

[illegible]

**Geo Sicilia - Via Liberta' n.90 - 98030 S.Domenica Vittoria (ME)**

<b>Committente:</b> Comune di San Pier Niceto	<b>Profondita' totale:</b> ml 20,00	<b>Rivestimento:</b> ml
<b>Cantiere:</b> Scuola materna "Centro"	<b>S.P.T.:</b> n° 3	<b>Doppio carotiere:</b> ml
<b>Sondaggio:</b> S3	<b>Camp. indisturbati:</b> n° 1	<b>Piezometro:</b> a tupe aperto ml 20,00
	<b>Camp. rimaneggiati:</b> n° 1	<b>Inclinometro:</b> ml
<b>Data:</b> Marzo 1995	<b>Cassette catalogatrici:</b> n° 4	<b>Corone spiccioli:</b> n°

[illegible]

Indagini geognostiche

Centro

Sondaggi meccanici

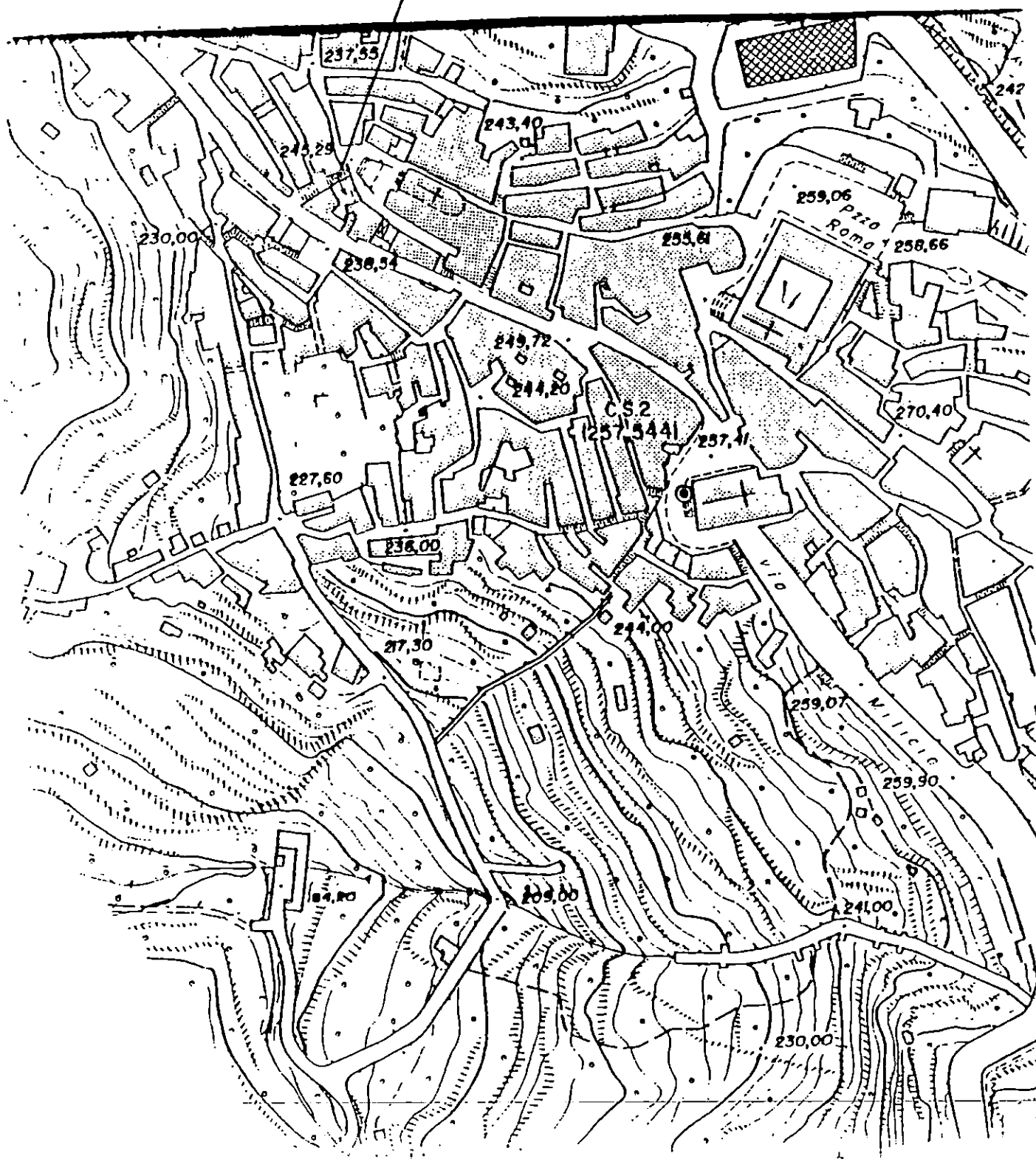
S<sub>6</sub>

Località S. Giacomo

# STRALCIO AEREOFOTOGRAMMETRICO

RAPP. 1/2000

AREA INTERESSATA





Quota assoluta	Profond. Progress.	Spessore dello strato	Litologia	Descrizione Stratigrafica	Formaz. Geologica	S.P.T.				Falda	Campioni		Sondaggio	Rivestim.	% corollaggio	Doppio Carotiere	R.Q.D.	Metetro
						n°	N. Coli	cm. Pen.	Prof. m.		Rim.	Ind.						

[illegible]

Indagini geognostiche

Centro

Traverse sismiche

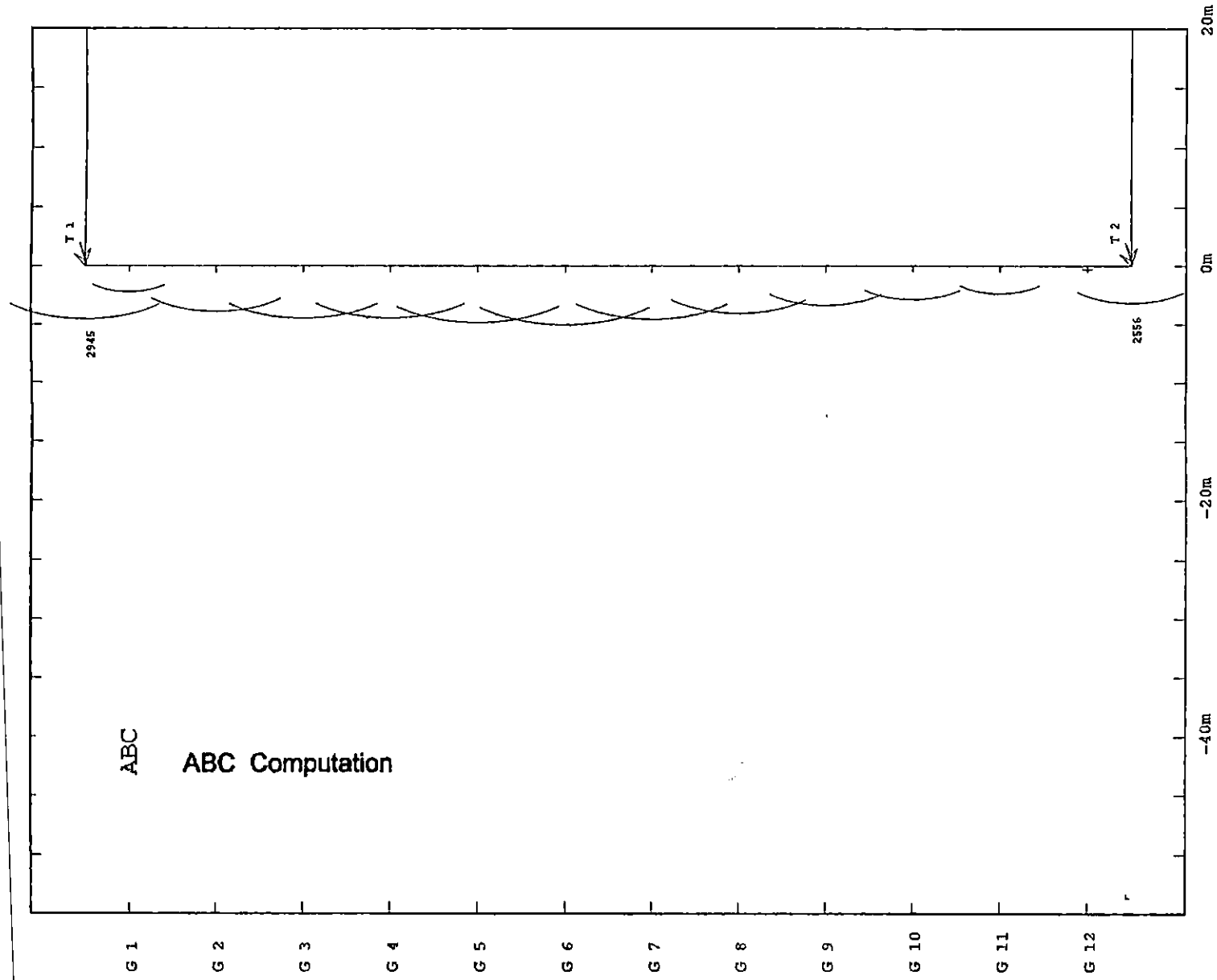
$T_2 - T_3$

Località via Annibale Maria di Francia

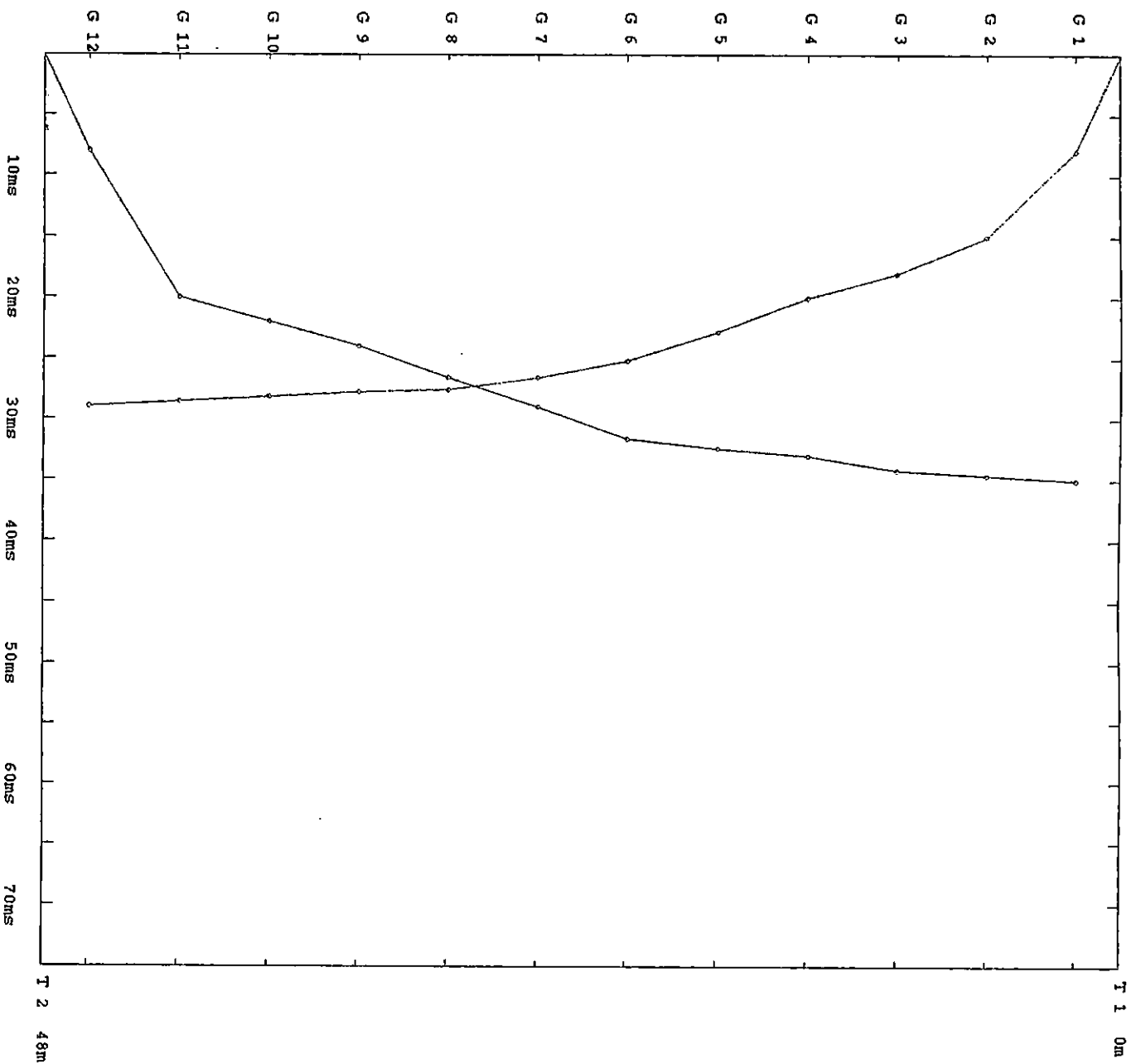


S2

S2 SPN X 1/ 250 Y 1/ 500



S2



SEISMIC SYSTEM  
PASI srl Via Goito 8 10125 TURIN ITALY

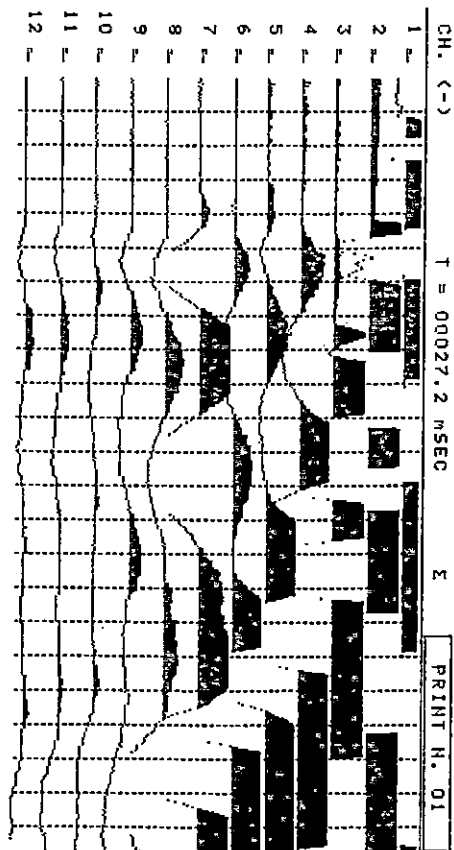
TEST 4  
10:49 1:24:03

RECORD TIME 100 msec.  
DELAY TIME 0 msec.

MARKER TIME msec.

CH.01	9.8	CH.07	26.6
CH.02	17.0	CH.08	27.6
CH.03	19.0	CH.09	27.8
CH.04	19.4	CH.10	28.2
CH.05	24.2	CH.11	28.6
CH.06	25.2	CH.12	29.0

GRID STEP 04 msec.



OPERATOR :

NOTE

SEISMIC SYSTEM  
PASI srl Via Goito 8 10125 TURIN ITALY

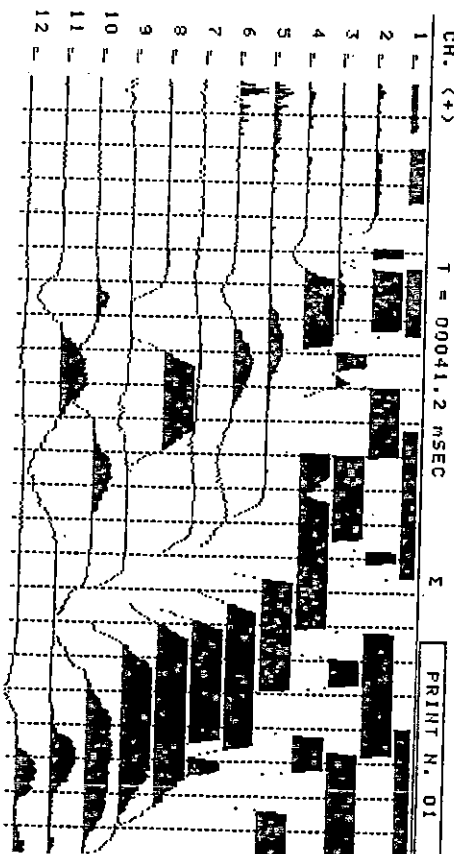
TEST 5  
11:06 1:24:03

RECORD TIME 100 msec.  
DELAY TIME 0 msec.

MARKER TIME msec.

CH.01	8.0	CH.07	31.6
CH.02	19.6	CH.08	32.4
CH.03	22.0	CH.09	32.4
CH.04	23.4	CH.10	34.2
CH.05	26.6	CH.11	34.6
CH.06	28.8	CH.12	41.2

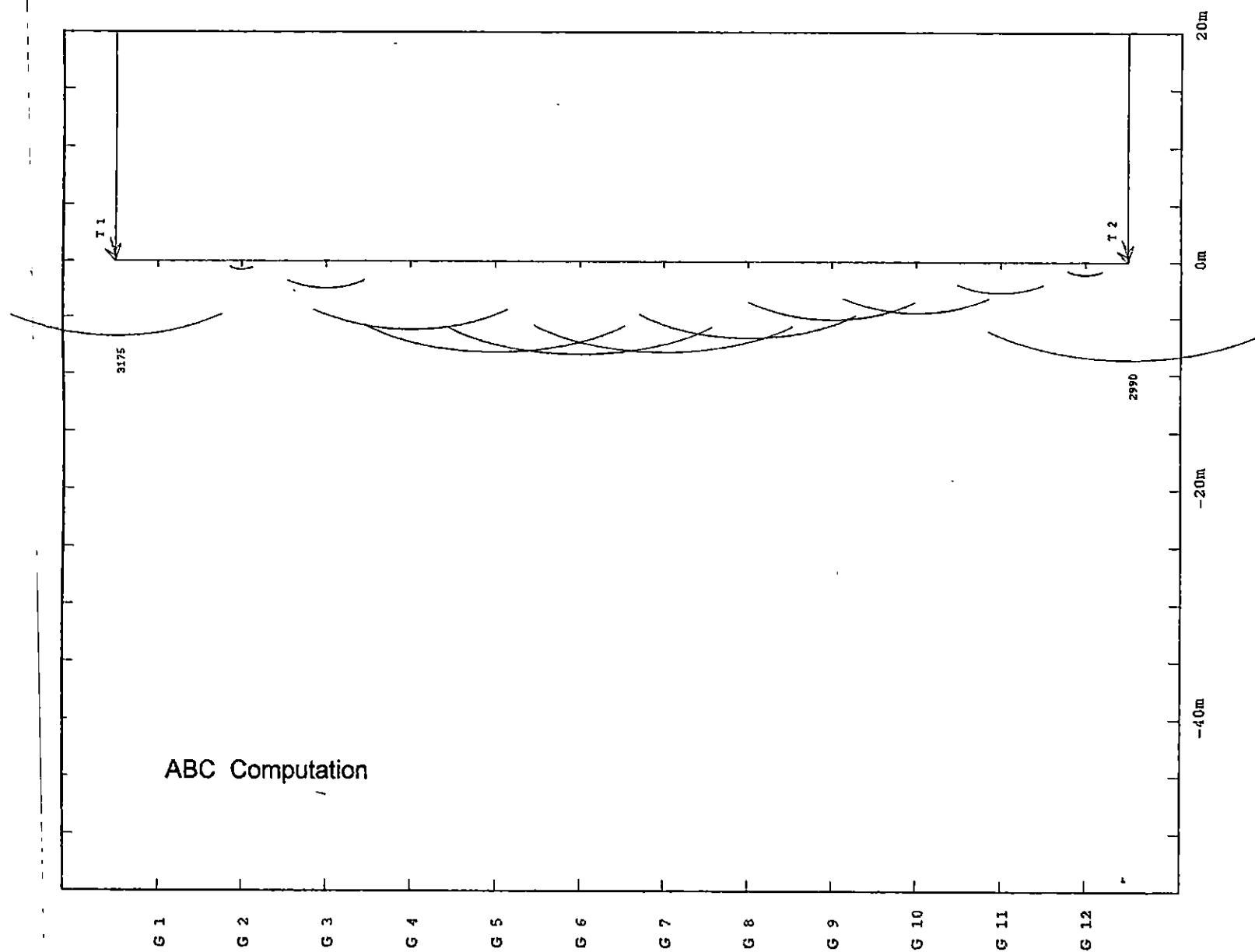
GRID STEP 04 msec.

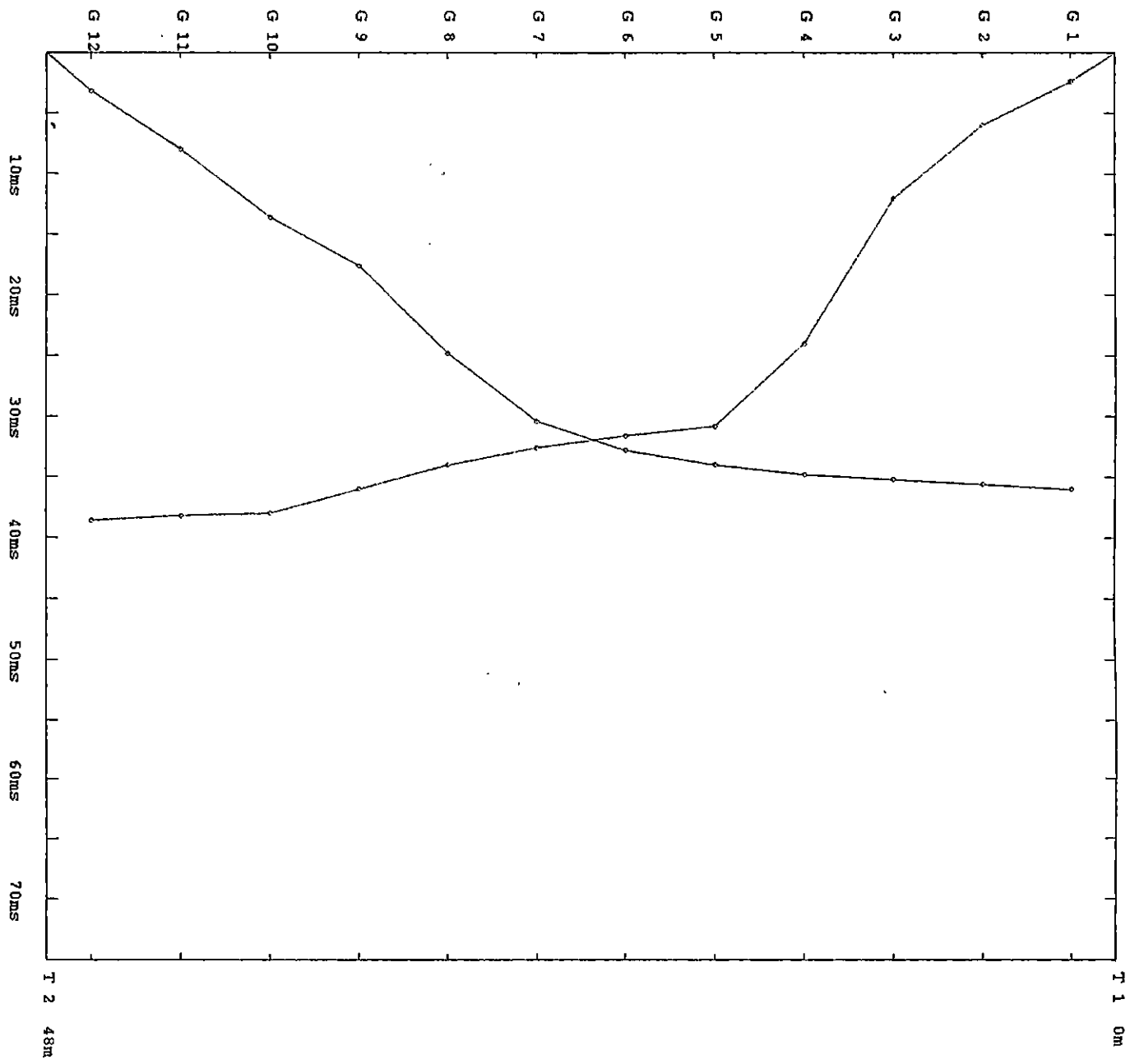


OPERATOR :

NOTE

S3 SPN X 1/ 250 Y 1/ 500





SEISMIC SYSTEM  
PASI srl Via Goito 8 10125 TURIN-ITALY

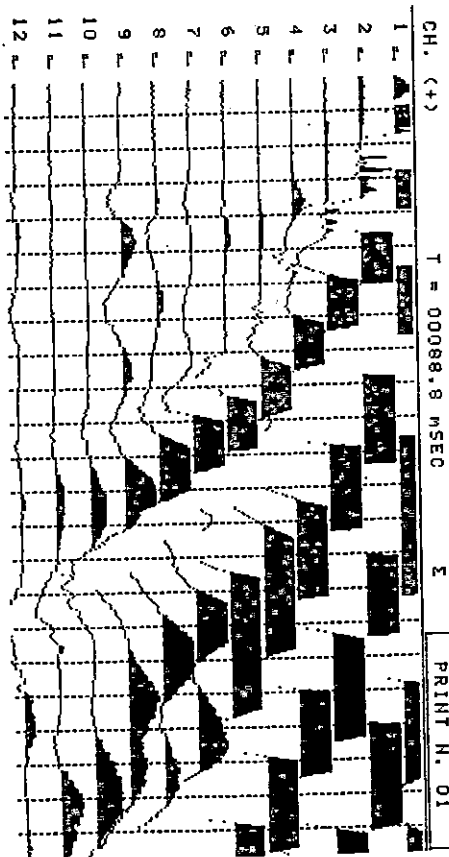
SEISMIC SYSTEM  
PASI srl Via Goito 8 10125 TURIN ITAL

TEST 7  
11:41 1:24:03

RECORD TIME 200 msec.  
DELAY TIME 0 msec.  
MARKER TIME msec.

CH.01	2.4	CH.07	36.8
CH.02	6.0	CH.08	43.6
CH.03	12.0	CH.09	62.8
CH.04	24.0	CH.10	80.0
CH.05	30.8	CH.11	82.4
CH.06	31.6	CH.12	88.8

GRID STEP 08 msec.



OPERATOR :

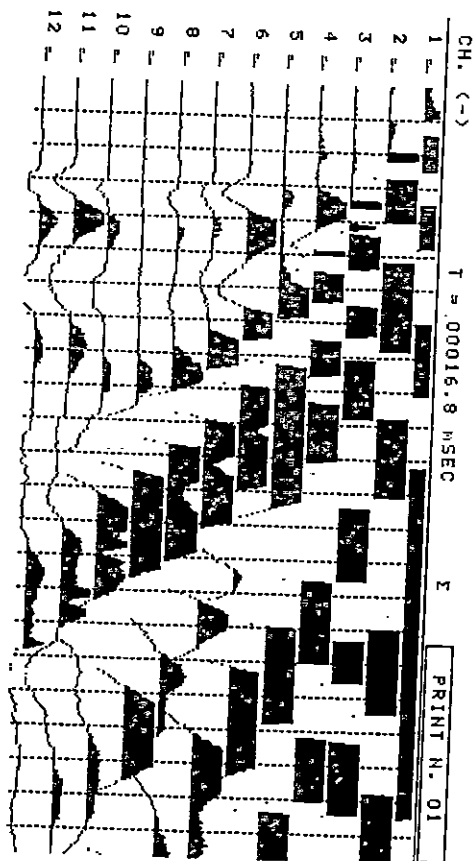
NOTE

TEST 8  
11:51 1:24:03

RECORD TIME 200 msec.  
DELAY TIME 0 msec.  
MARKER TIME msec.

CH.01	3.2	CH.07	32.8
CH.02	16.8	CH.08	34.0
CH.03	13.6	CH.09	34.8
CH.04	17.6	CH.10	35.2
CH.05	24.8	CH.11	35.2
CH.06	30.4	CH.12	36.0

GRID STEP 08 msec.



OPERATOR :

NOTE

---

Indagini geognostiche

S. Pier Marina

Prova penetrometrica

Dim 1

Località via Sen. Pietro Pitrone

---



# RILIEVO AEROFOTOGRAMMETRICO

scala 1:10.000

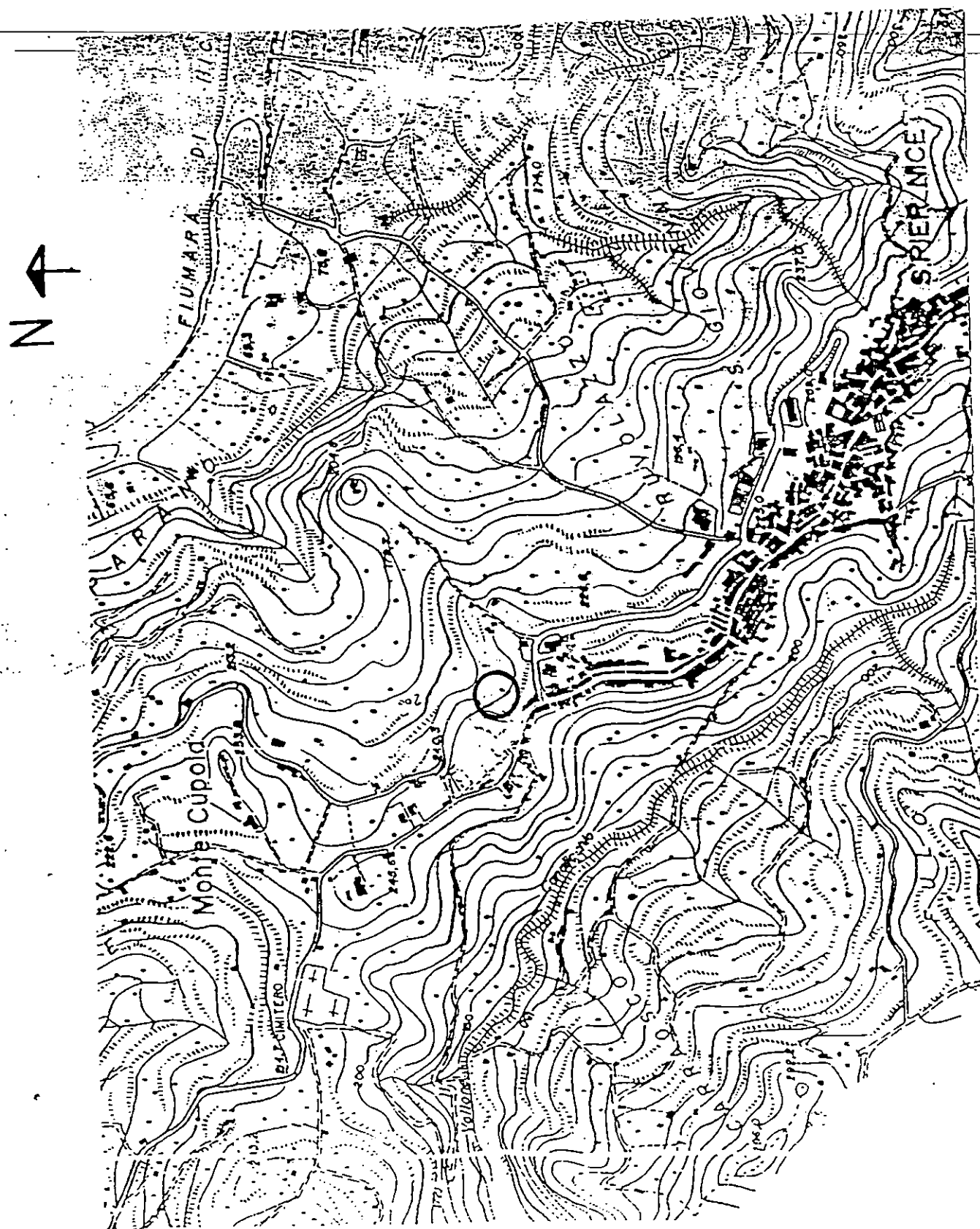
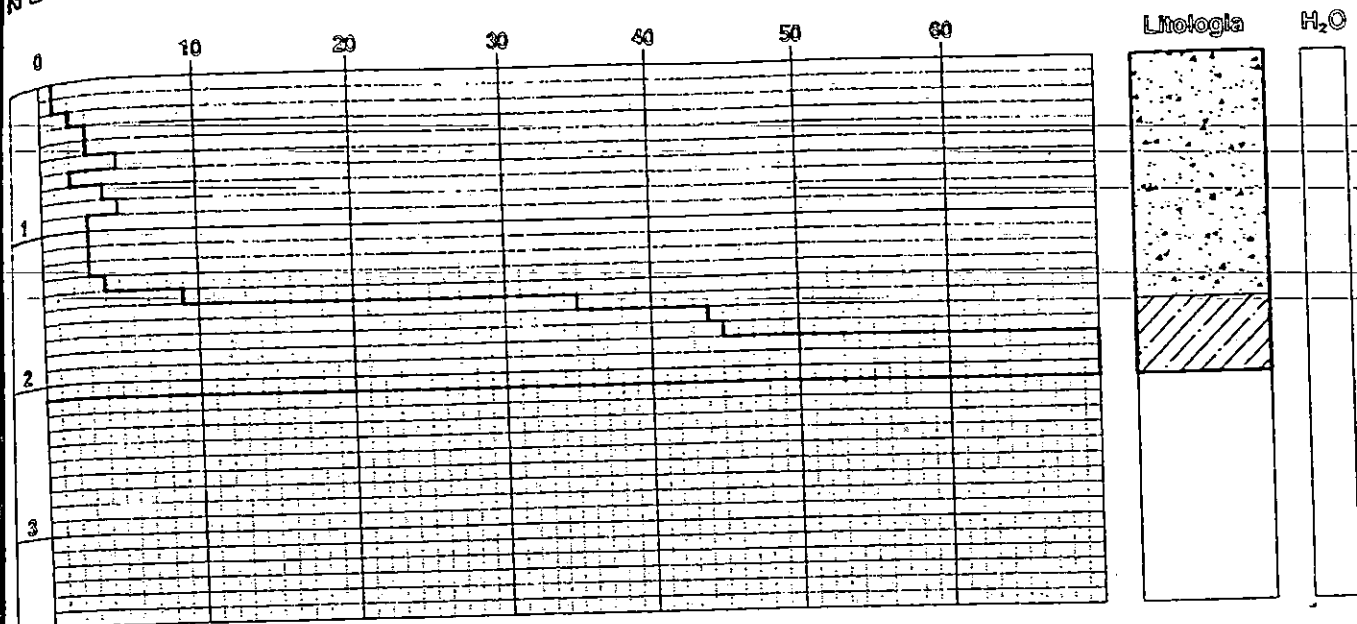


Fig.1

○ Area d'intervento

N DL030 → P1

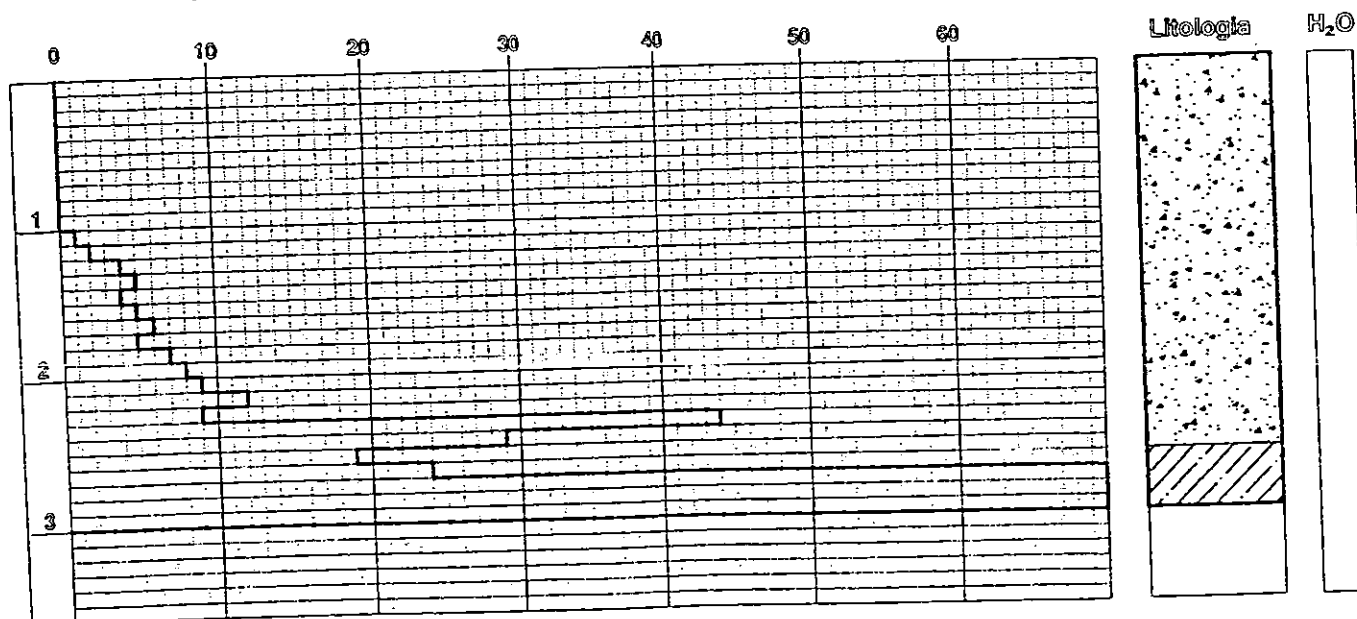
# DYNAMIC - PENETROMETER TEST



Descrizione: 0,00 - 1,60 Copertura detritica  
1,60 - Alternanza di banconi arenacei  
e livelli argillitici e siltitici

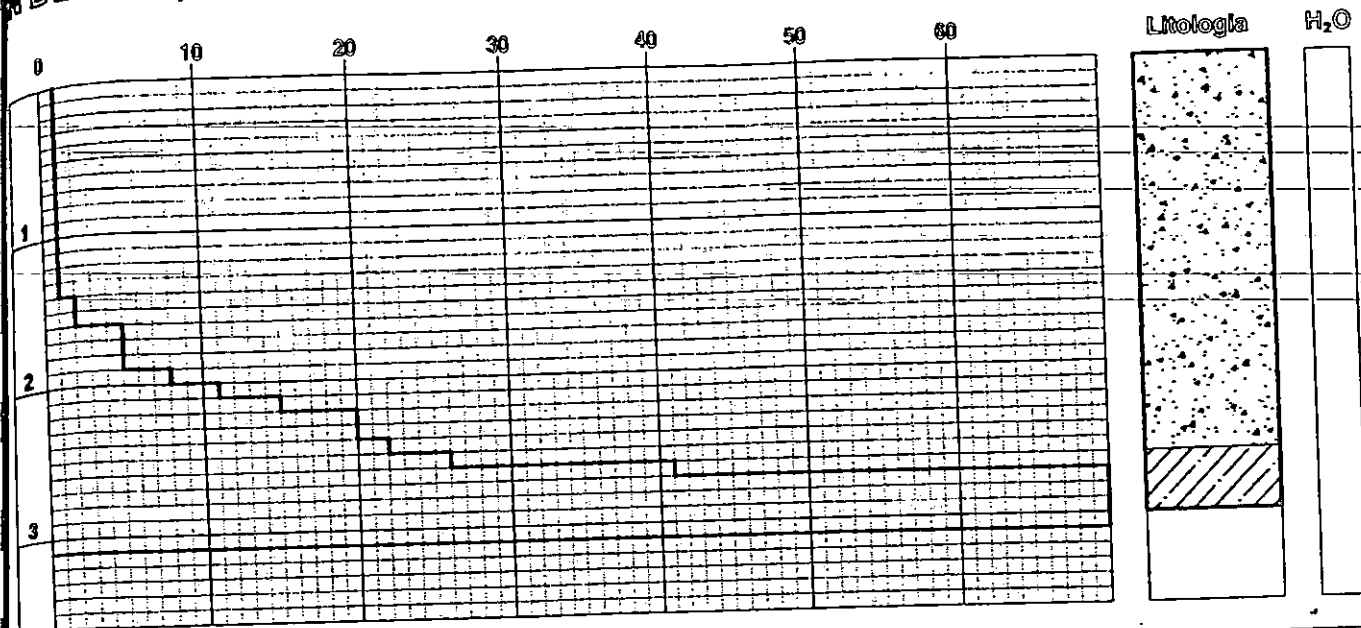
N DL030 → P2

# DYNAMIC - PENETROMETER TEST



Descrizione: 0,00 - 2,60 Copertura detritica  
2,60 - Alternanza di banconi arenacei  
e livelli argillitici e siltitici

DL030 → P3



Descrizione: 0,00 - 2,60 Copertura detritica  
 260 - Alternanza di banconi arenacei  
 e livelli argillitici e siltitici

# RILIEVO AEROFOTOGRAMMETRICO

scala 1:10.000

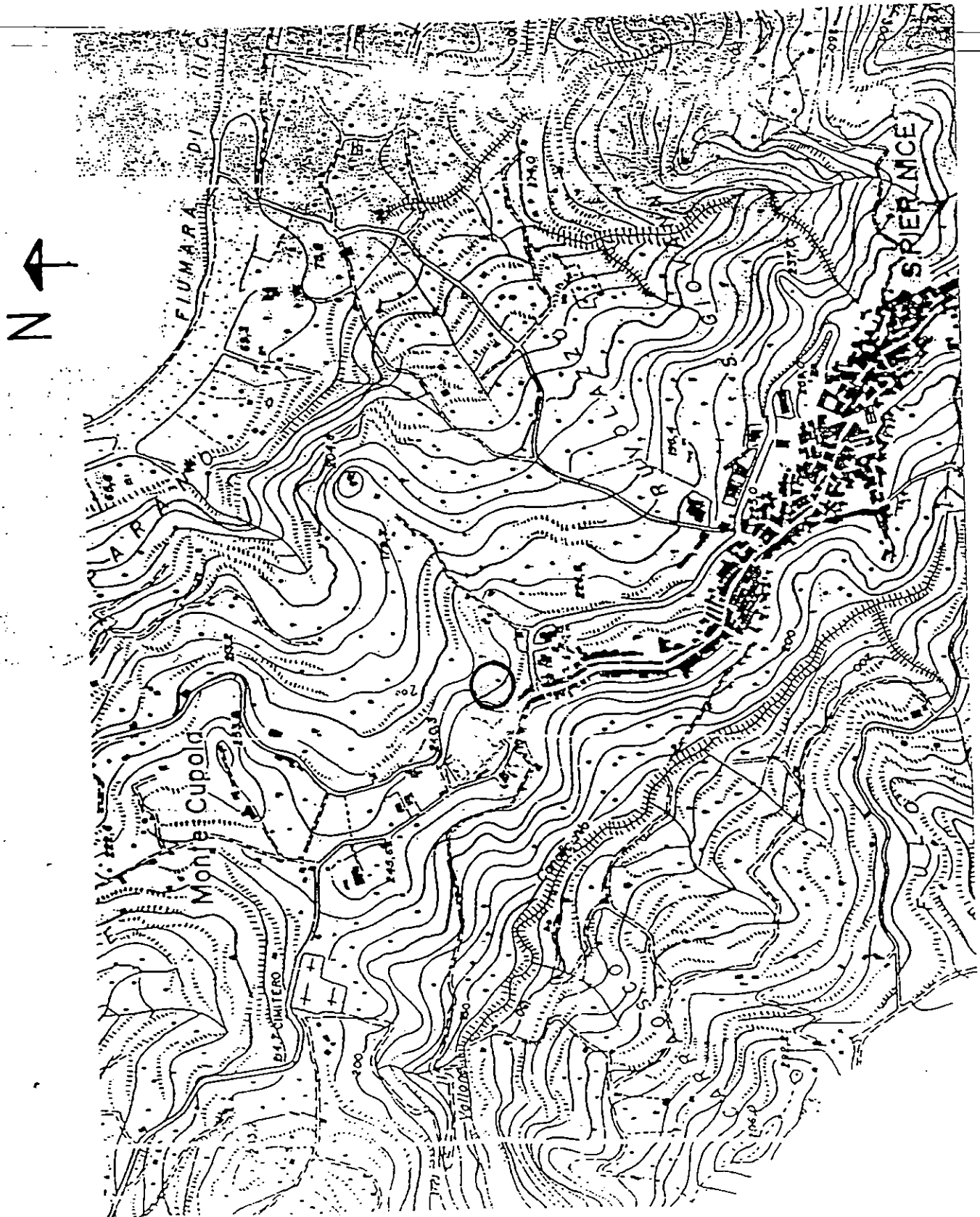
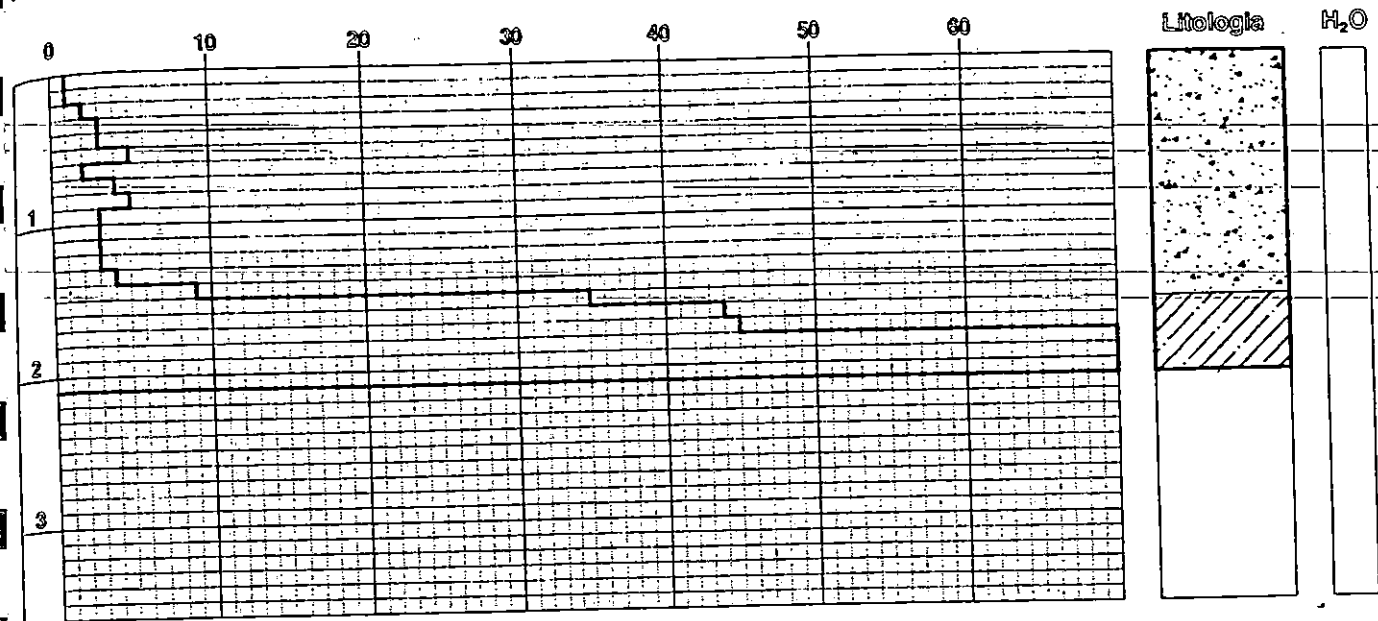


Fig.1

○ Area d'intervento

N DL030 → P1

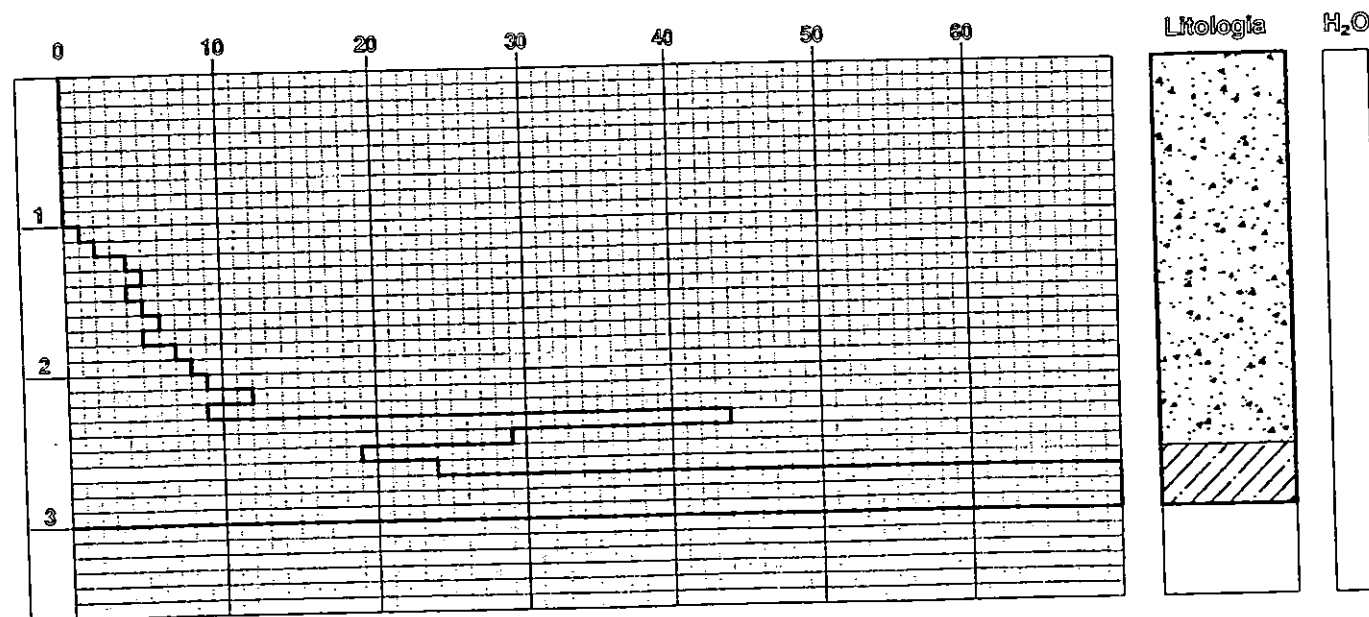
# DYNAMIC - PENETROMETER TEST



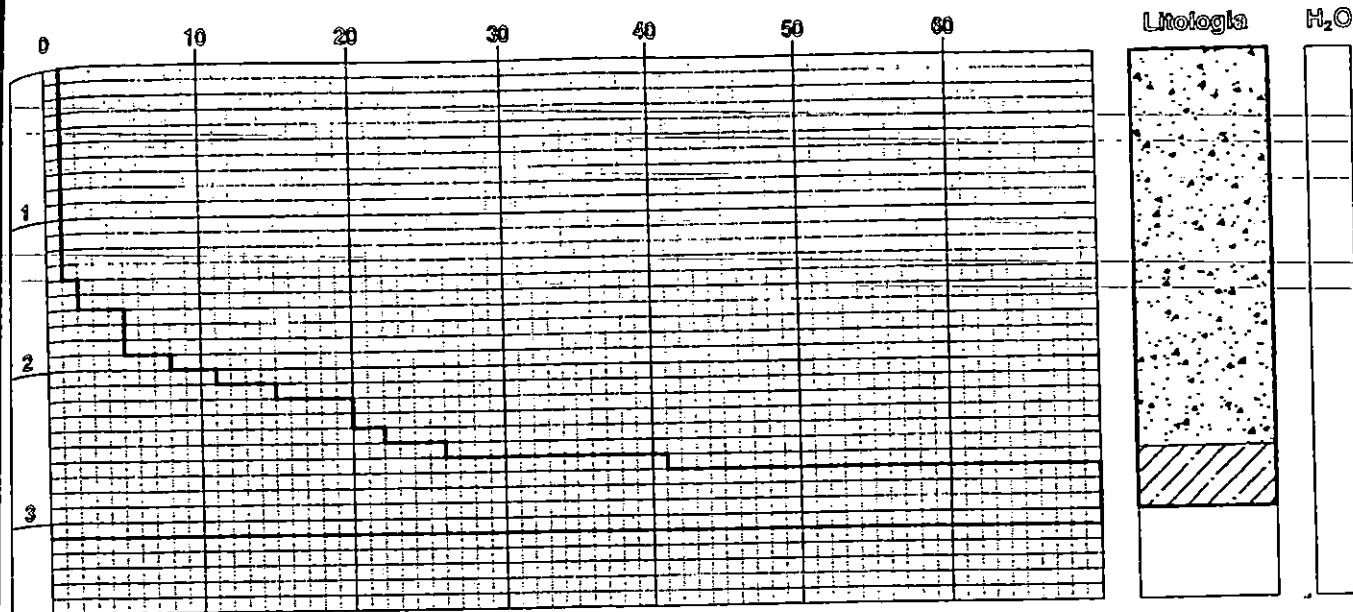
Descrizione: 0,00 - 1,60 Copertura detritica  
 1,60 - Alternanza di banconi arenacei  
 e livelli argillitici e siltitici

N DL030 → P2

# DYNAMIC - PENETROMETER TEST



Descrizione: 0,00 - 2,60 Copertura detritica  
 2,60 - Alternanza di banconi arenacei  
 e livelli argillitici e siltitici



Descrizione: 0,00 - 2,60 Copertura detritica  
 260 - Alternanza di banconi arenacei  
 e livelli argillitici e siltitici

Indagini geognostiche

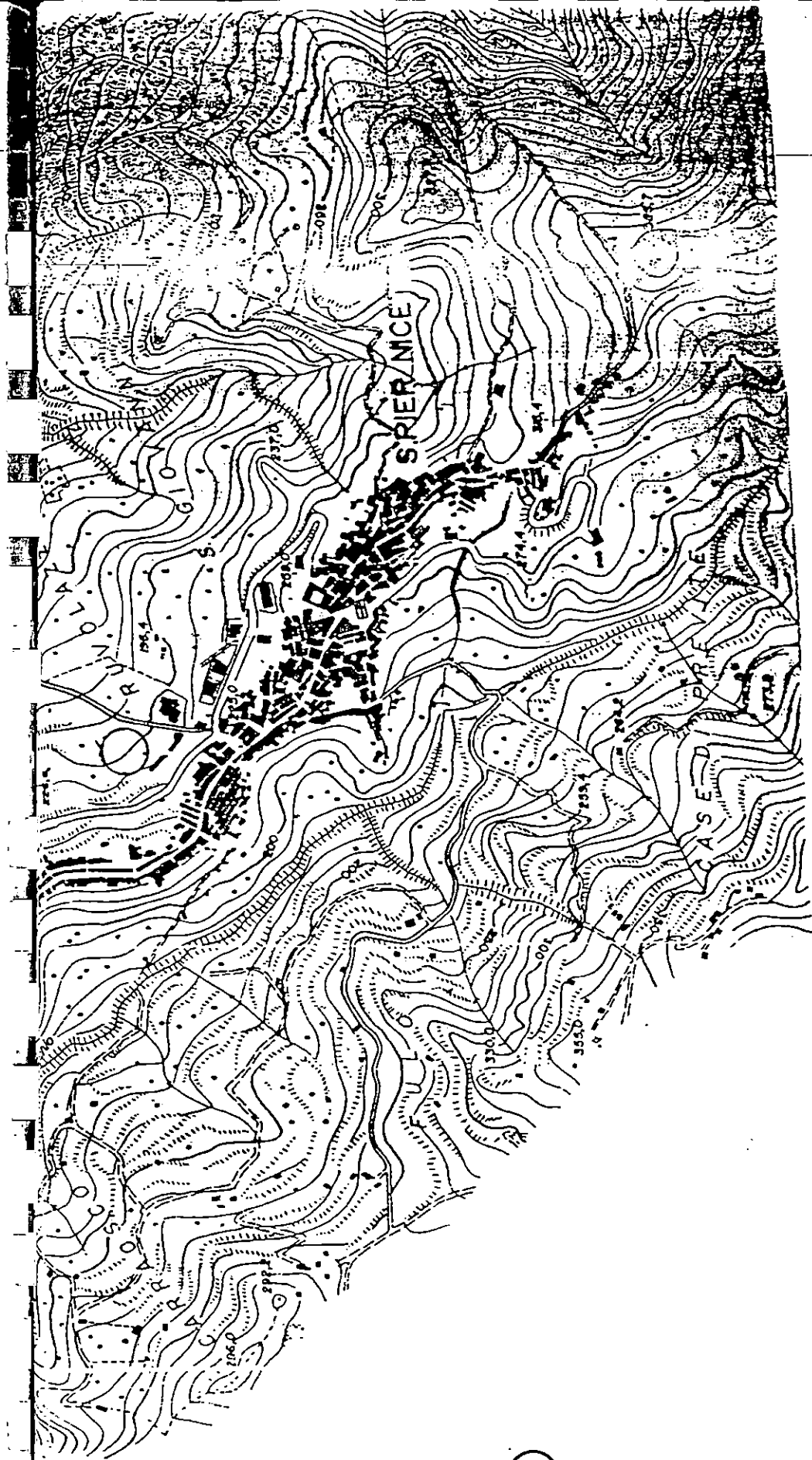
Centro

Prova penetrometrica

Dim 2

Località Barbitile





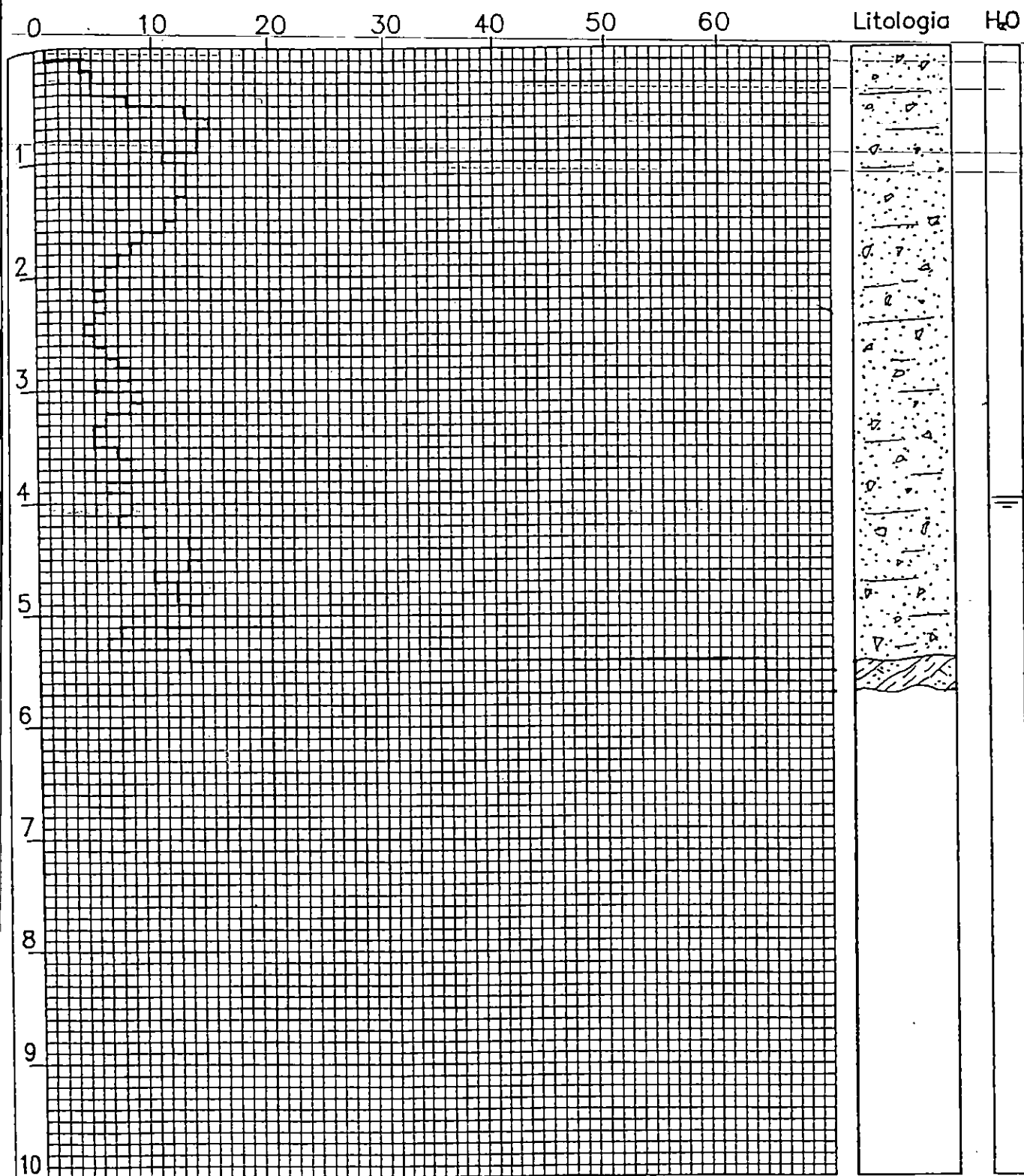
Area d'intervento

scala 1:10.000

N DL030 ➡

P<sub>1</sub>

# DYNAMIC-PENETROMETER TEST



Descrizione:

0,00 - 5,30

Copertura eluvio-detritica

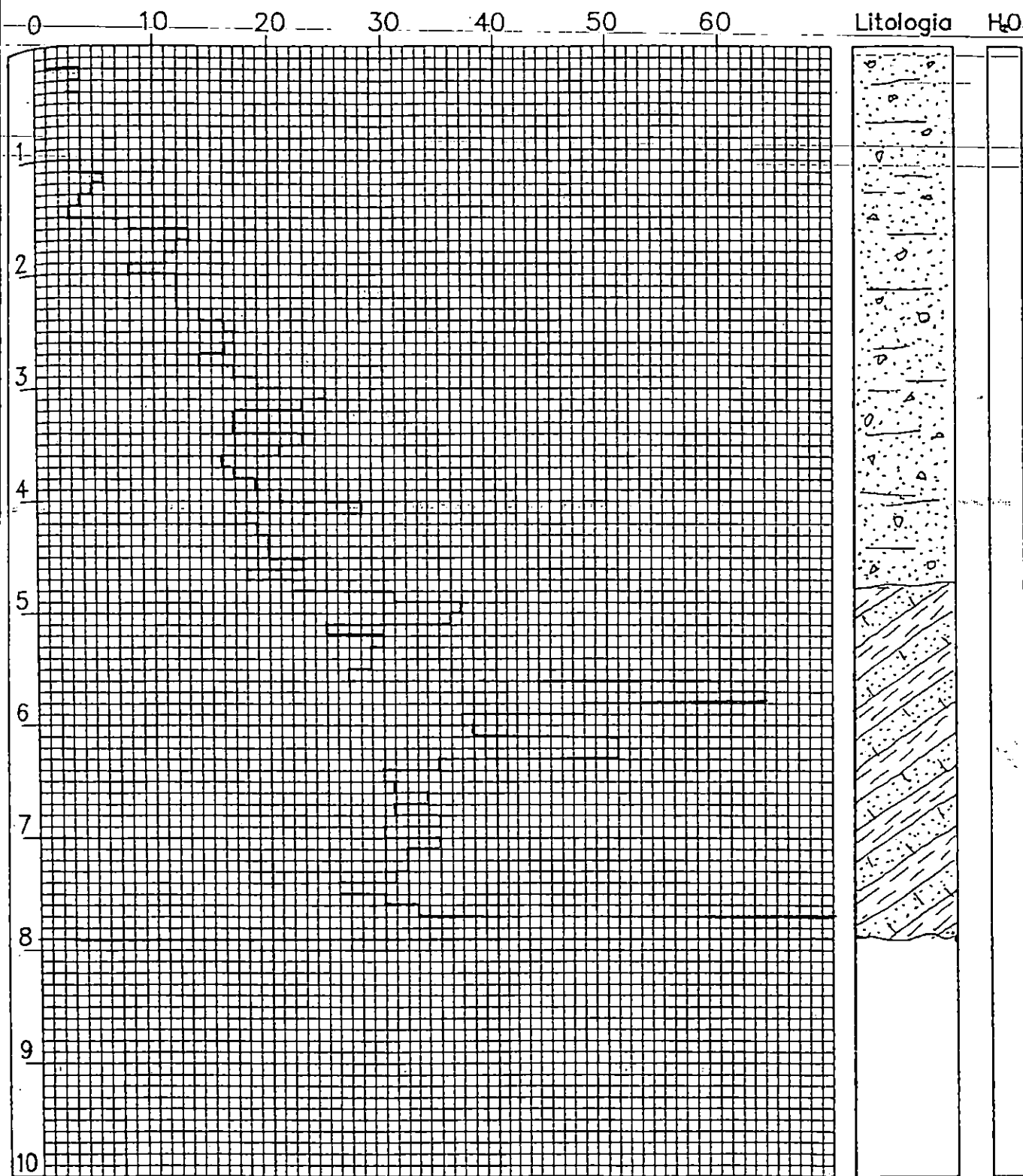
5,30 - 5,70

Formazione delle molasse

N DLO30 →

P<sub>2</sub>

# DYNAMIC-PENETROMETER TEST



## Descrizione:

0,00 - 4,80

Copertura eluvio-detritica

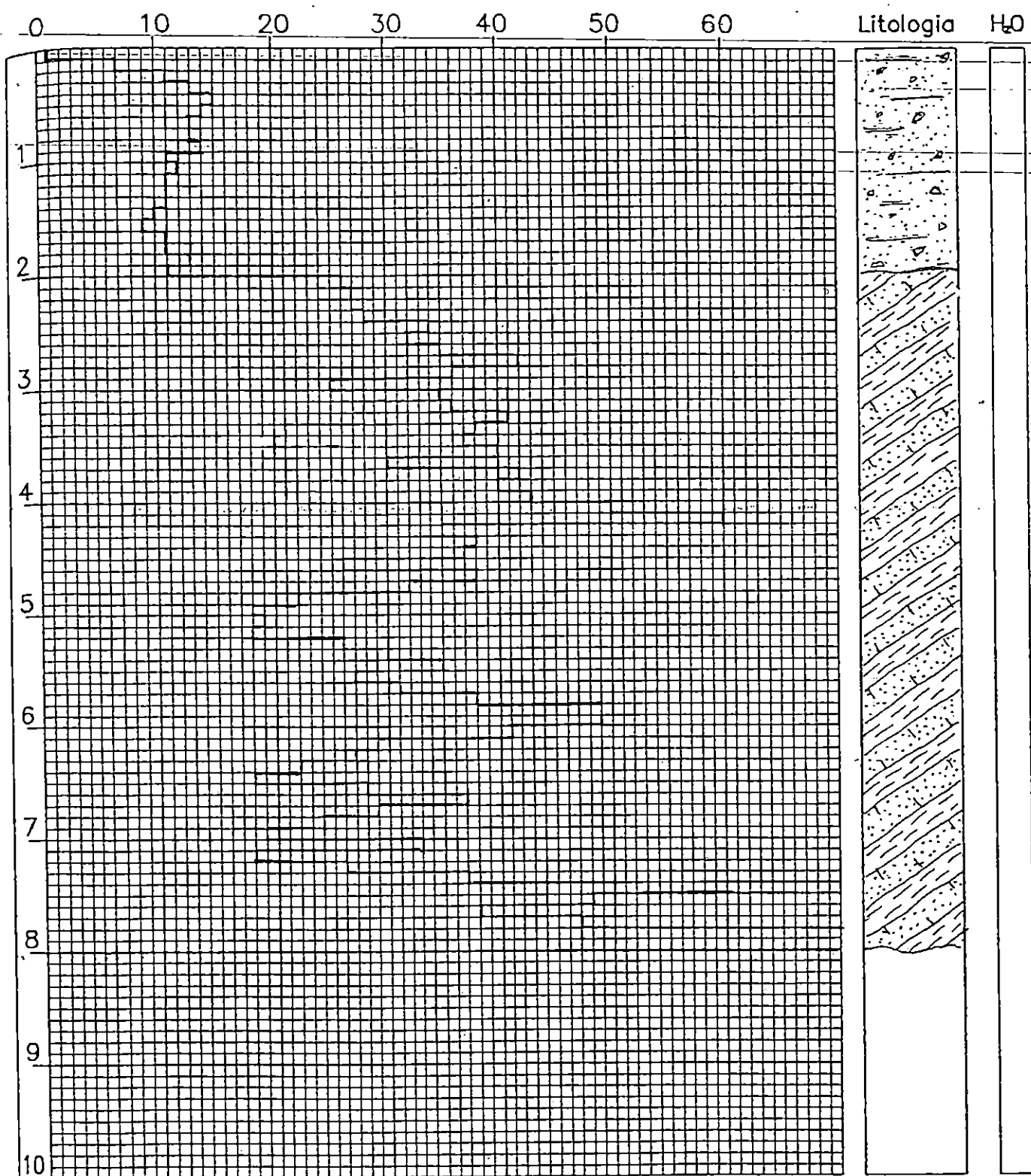
4,80 - 7,90

Formazione delle molasse

N DL030 ➡

P<sub>3</sub>

# DYNAMIC-PENETROMETER TEST



Descrizione:

0,00 - 2,00

Copertura eluvio-detritica

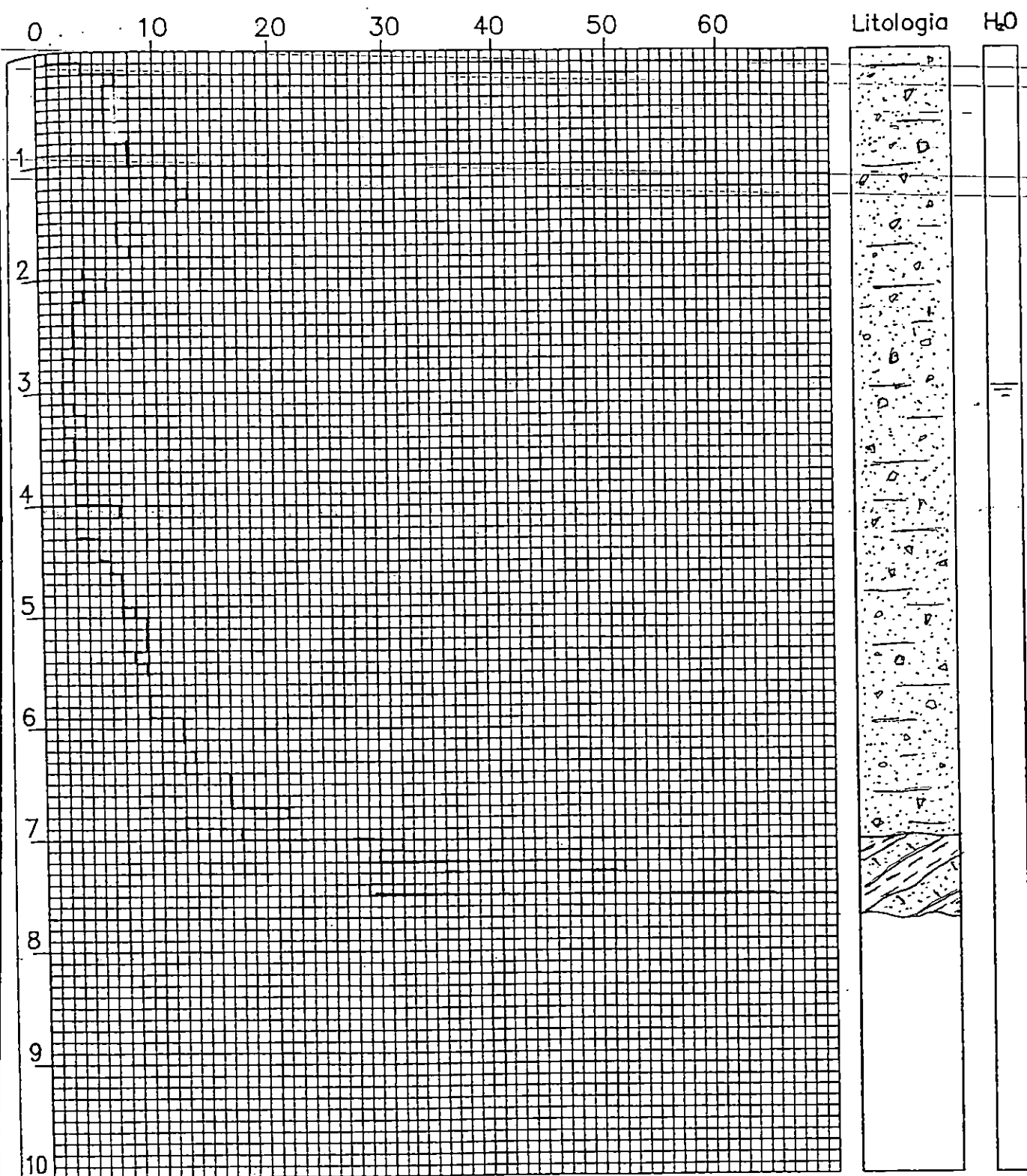
2,00 - 8,00

Formazione delle molasse

N DL030 ⇨

P<sub>4</sub>

## DYNAMIC-PENETROMETER TEST



## Descrizione:

0,00 - 7,00

Copertura eluvio-detritica

7,30 - 7,70

Formazione delle molasse

Indagini geognostiche

Centro

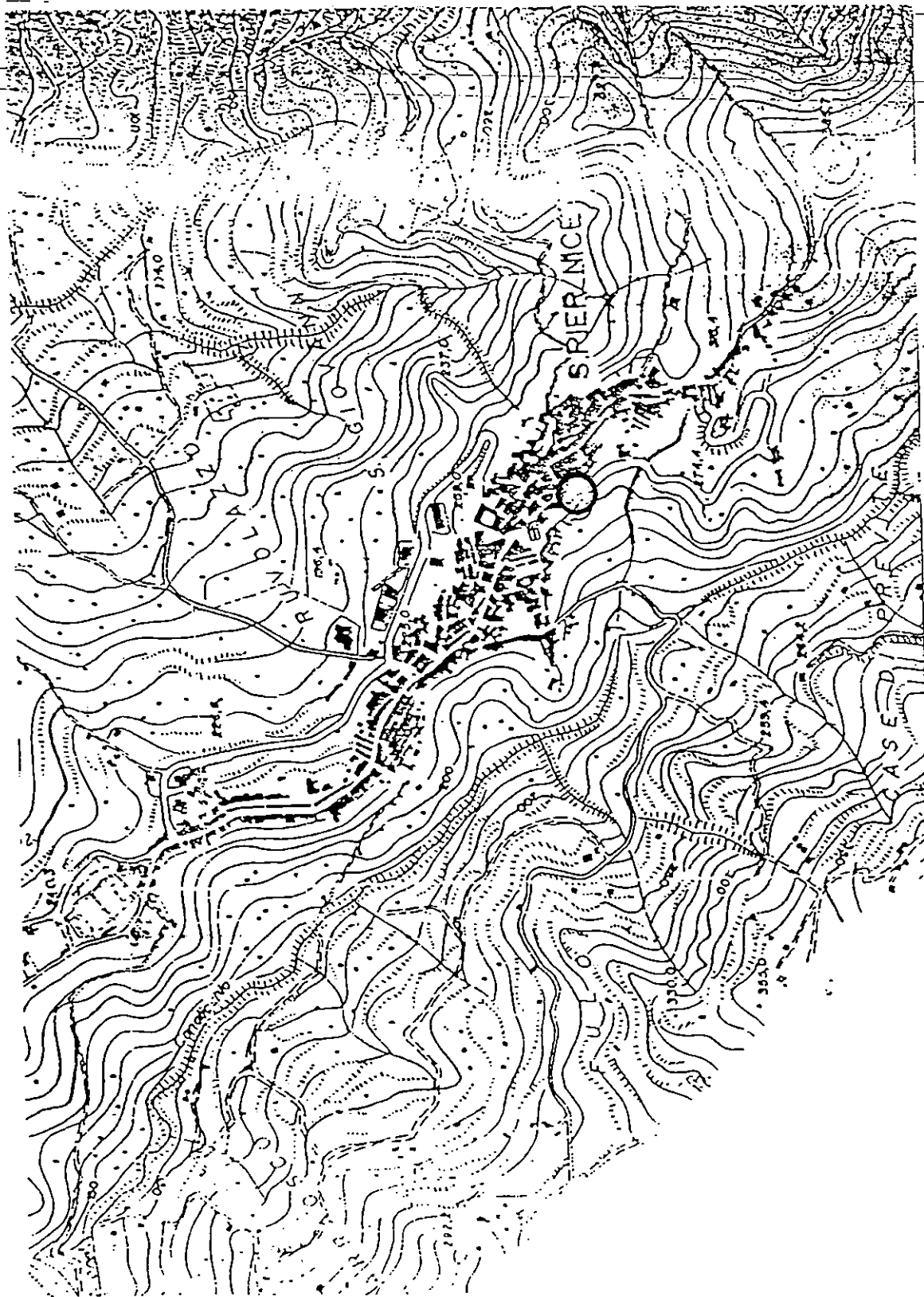
Prova penetrometrica

Dim <sub>3</sub>

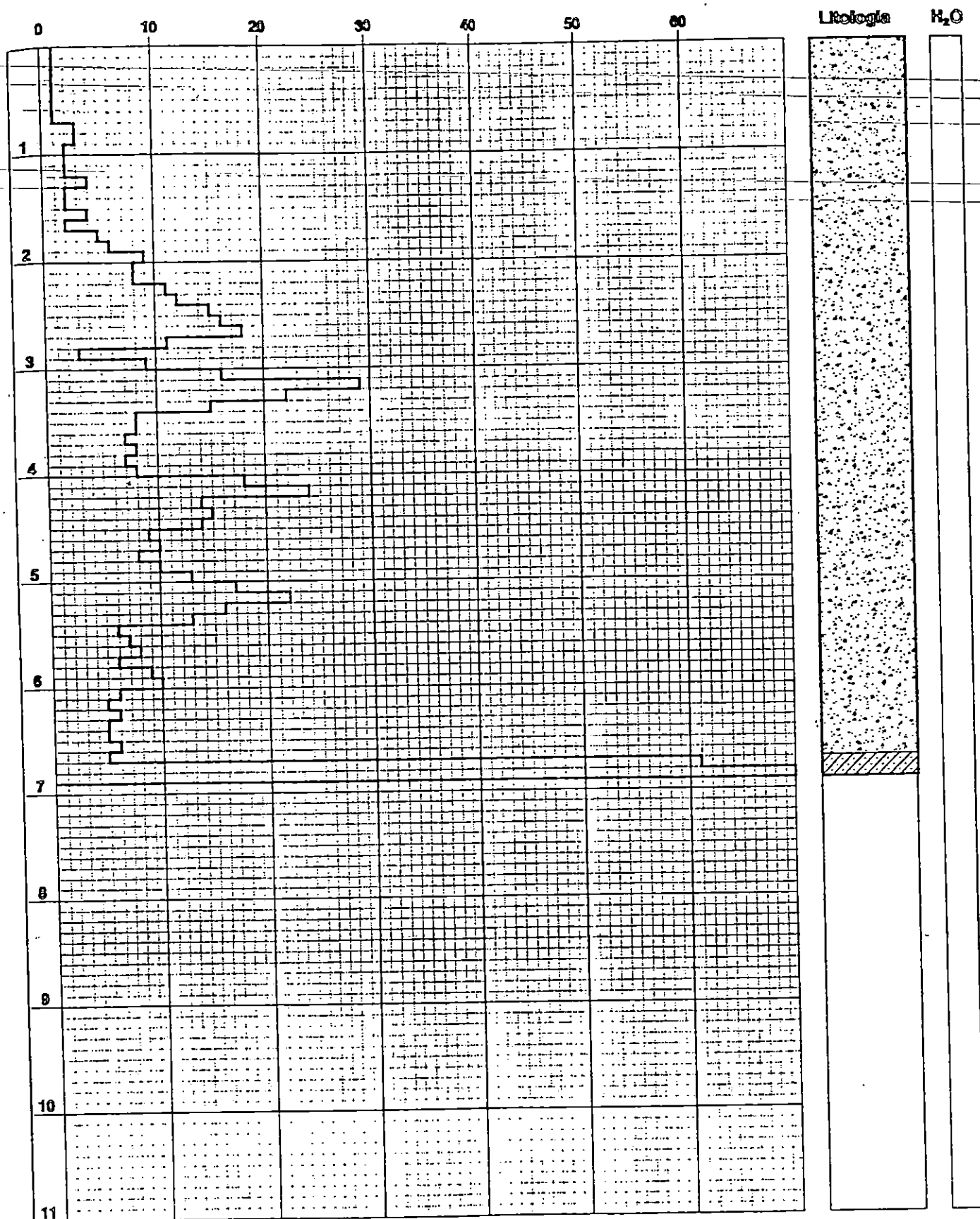
Località via Milicia

# Planimetria

Rapp. 1:10000

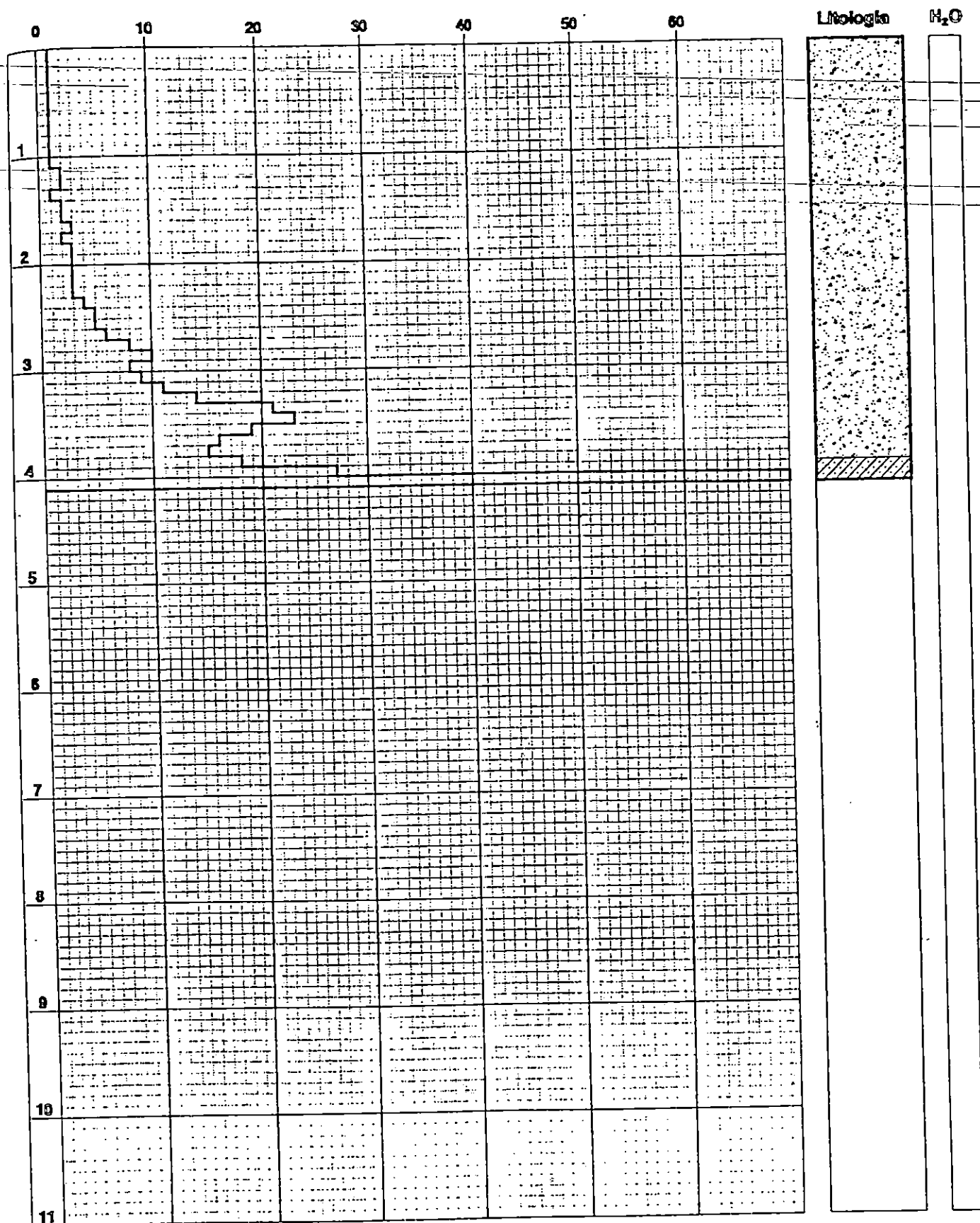


○ Area d'intervento

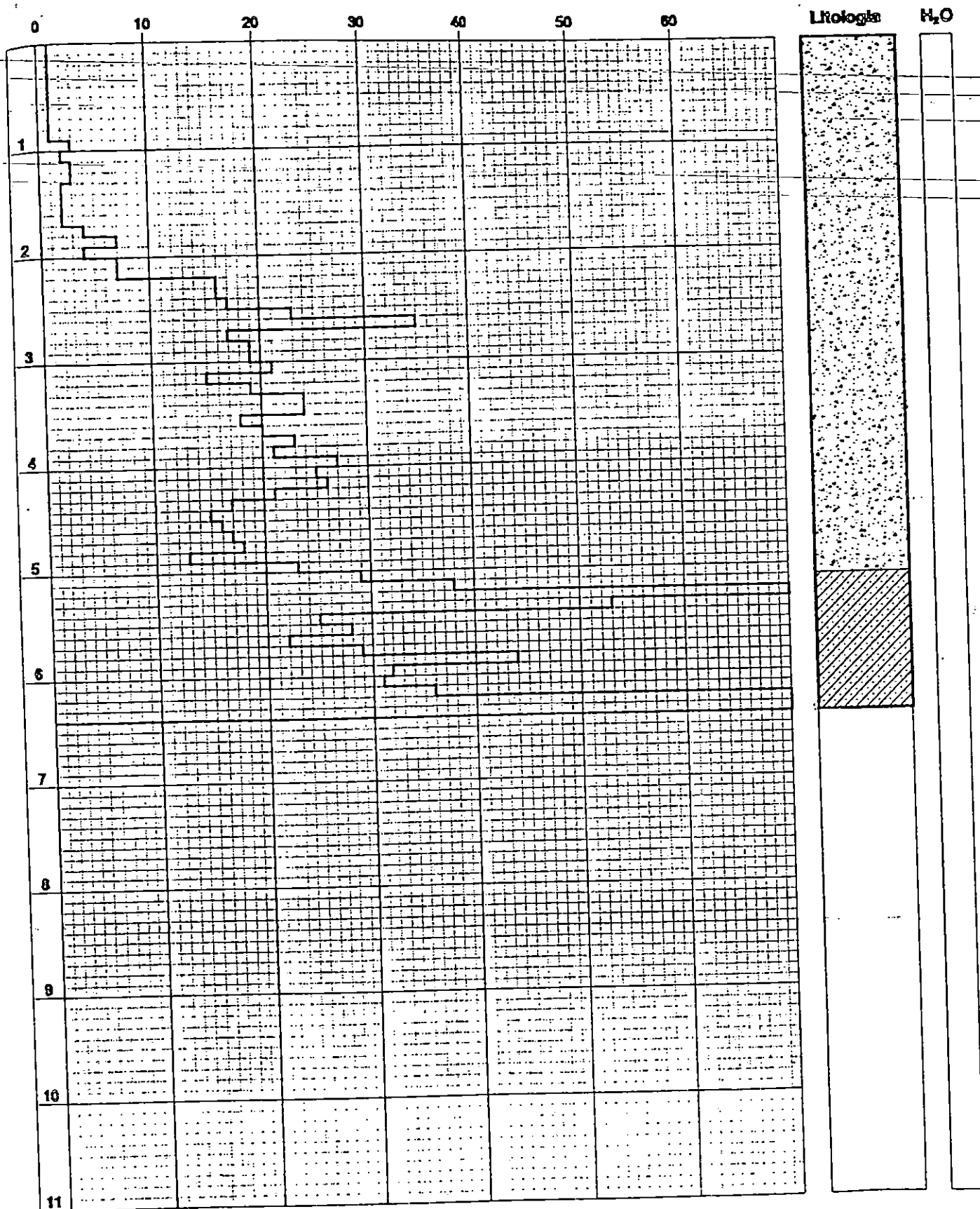


Descrizione: 0,00 - 6,70 Copertura eluvio-detritica  
 6,70 - Alternanza argillo-sabbiosa (Molasse)





Descrizione: 0,00 - 3,90 Copertura eluvio-detritica  
 3,90 - Alternanza argillo-sabbiosa (Molasse)



Descrizione: 0,00 - 5,10 Copertura eluvio-detritica  
 5,10 - Alternanza argillo-sabbiosa (Molasse)

Indagini geognostiche

Centro

Prova penetrometrica

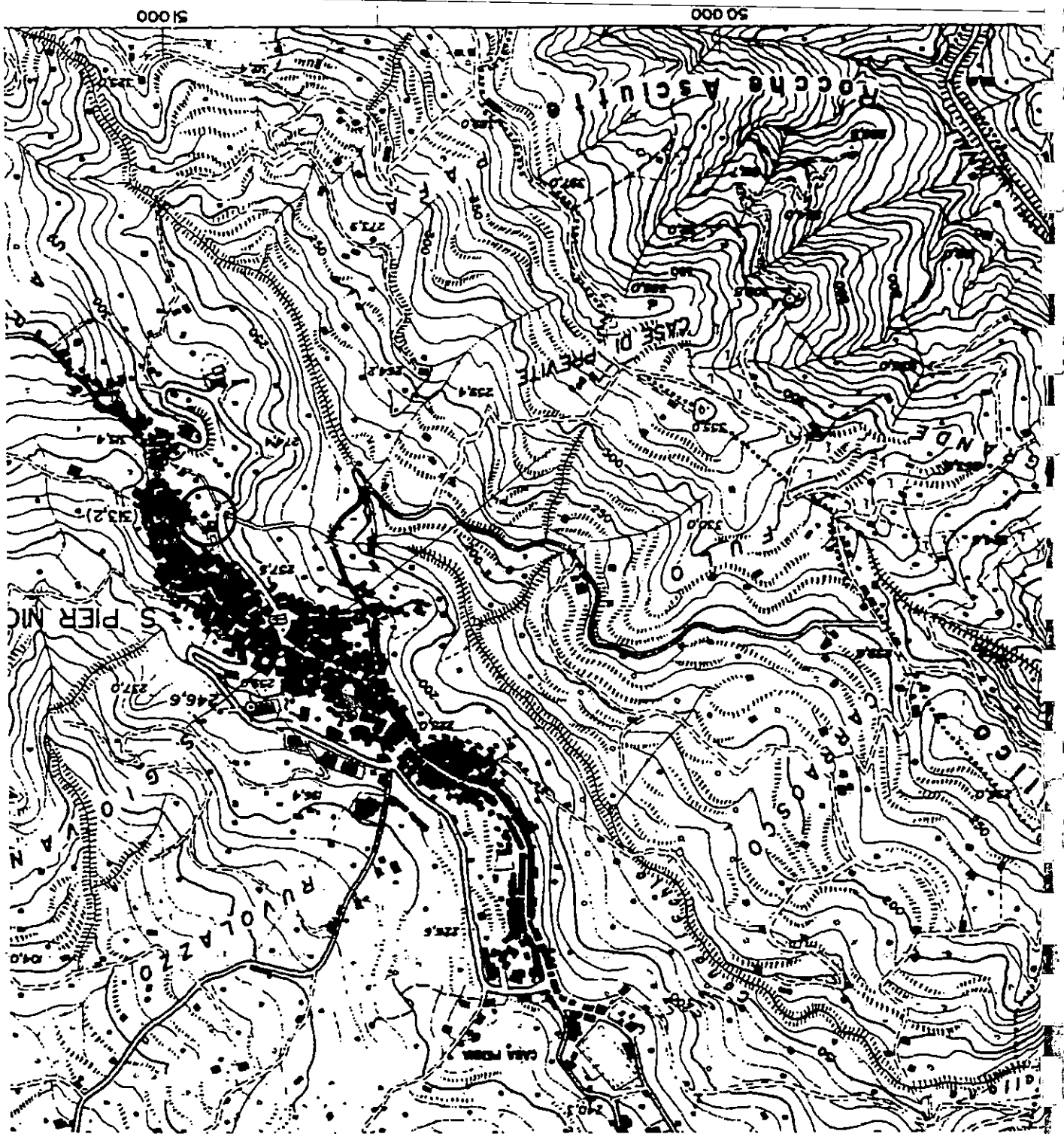
Dim 4

Località via Milicia

scala 1:10.000

# COROGRAFIA

○ Area d'intervento



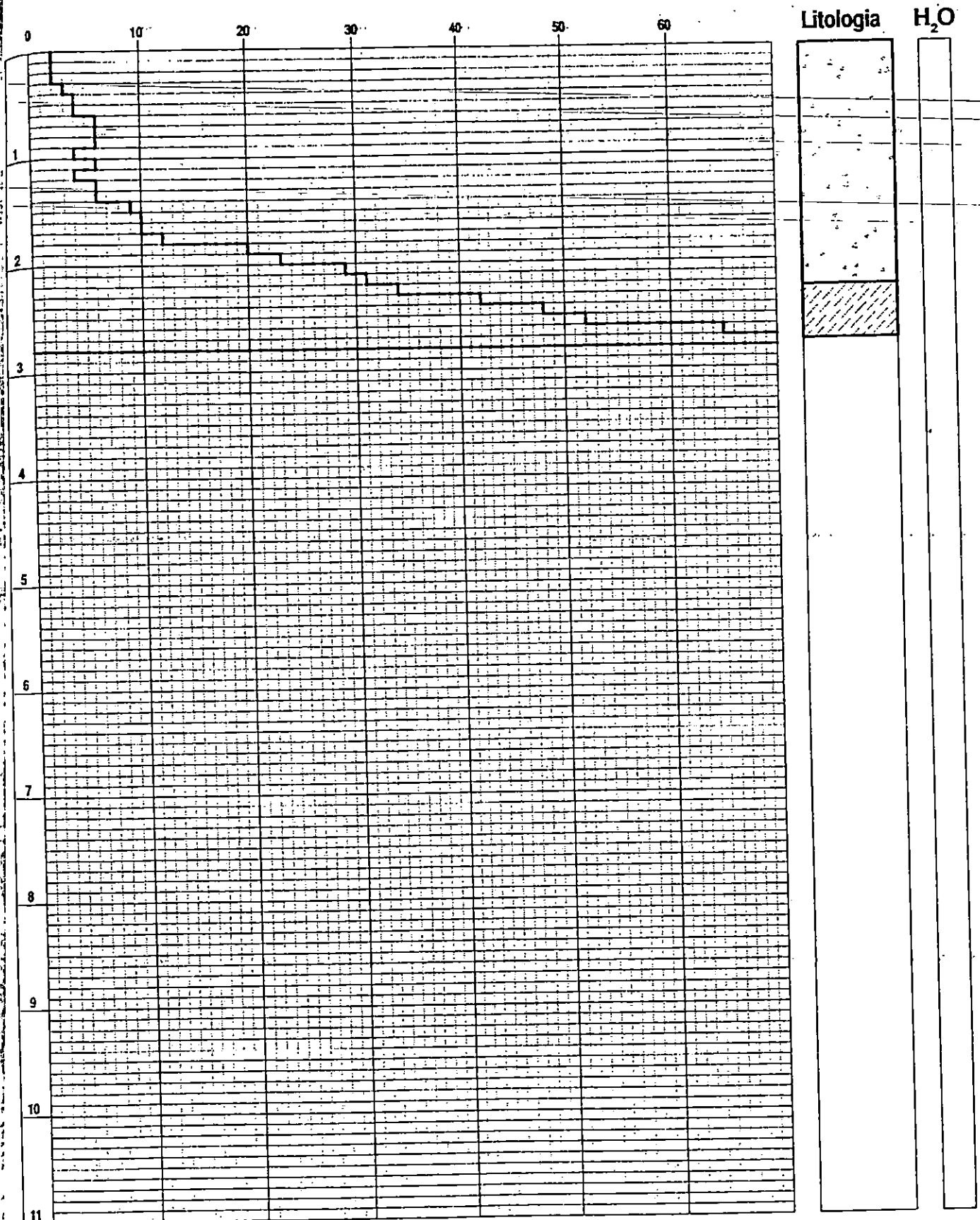
15° 21' 00"

51000

50000

N DL030 → P1

# DYNAMIC - PENETROMETER TEST

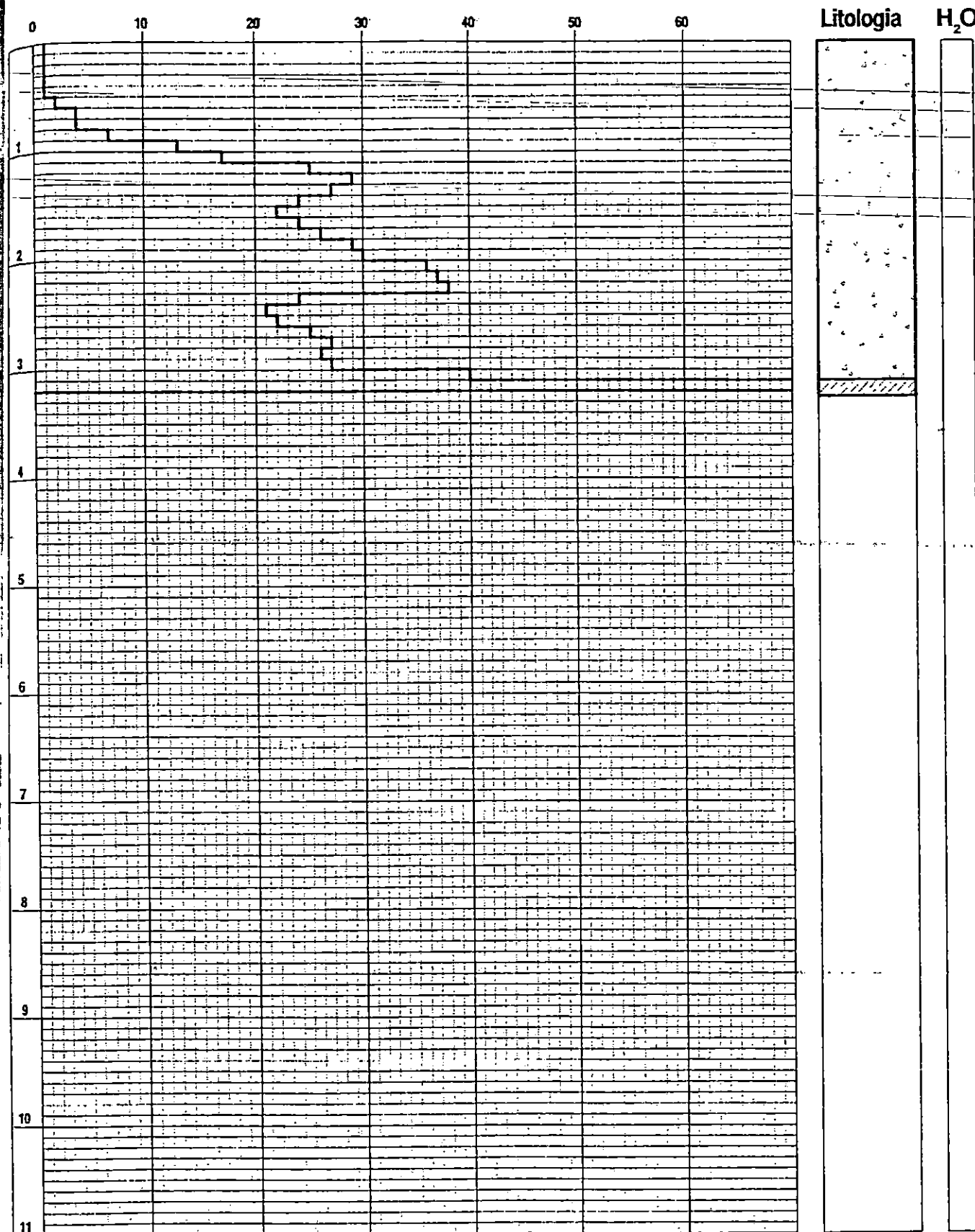


## Descrizione:

0,00 - 2,30 Copertura eluvio-detritica  
2,30 - Alternanza silto-argillosa

NDL030 → P2

## DYNAMIC - PENETROMETER TEST

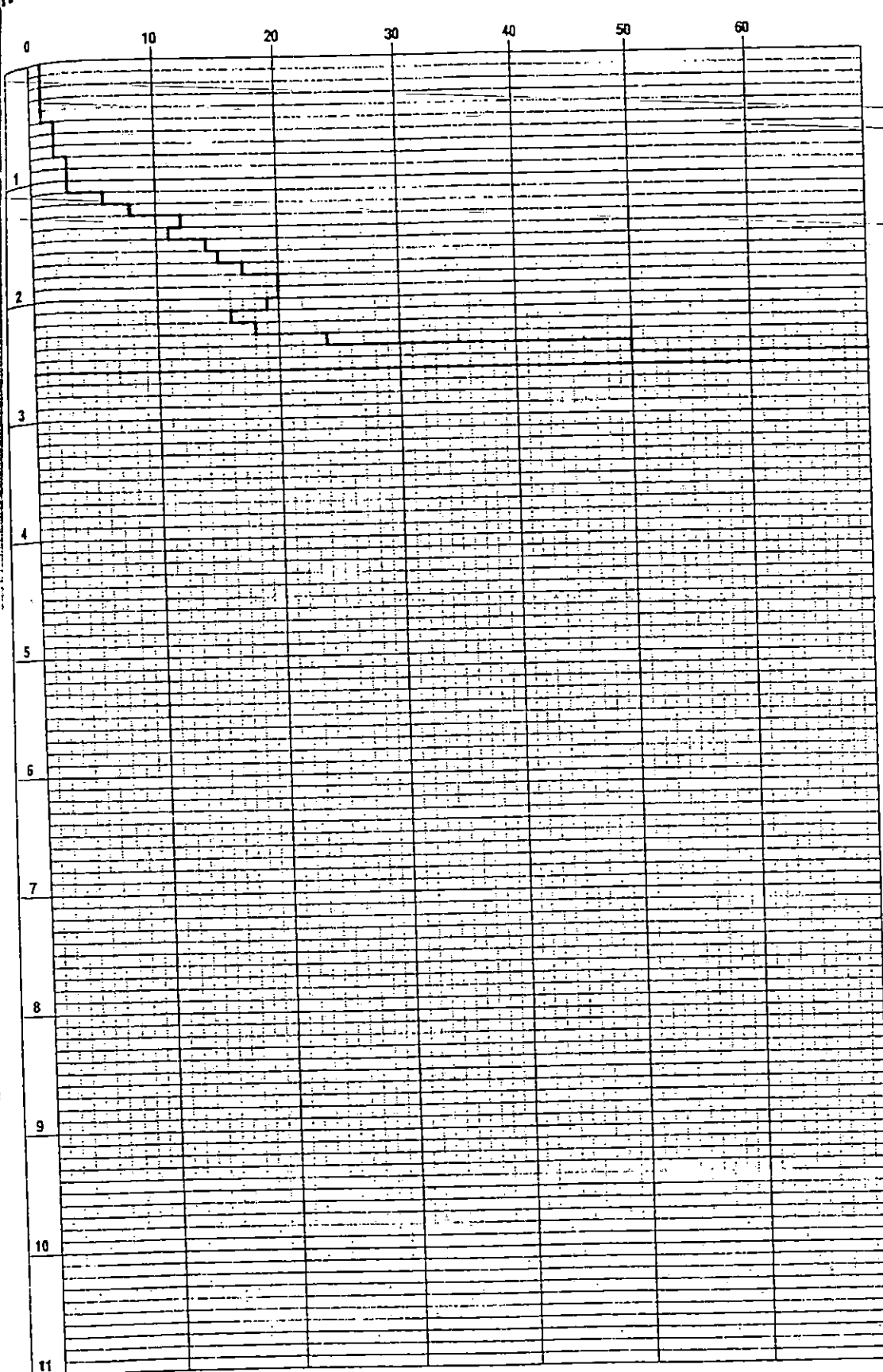


## Descrizione:

0.00 - 3.10 Copertura eluvio-detritica  
3.10 - Alternanza silto-argillosa

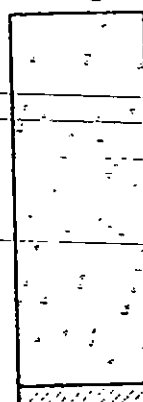
NDL030 → P3

# DYNAMIC - PENETROMETER TEST



Litologia

H<sub>2</sub>O

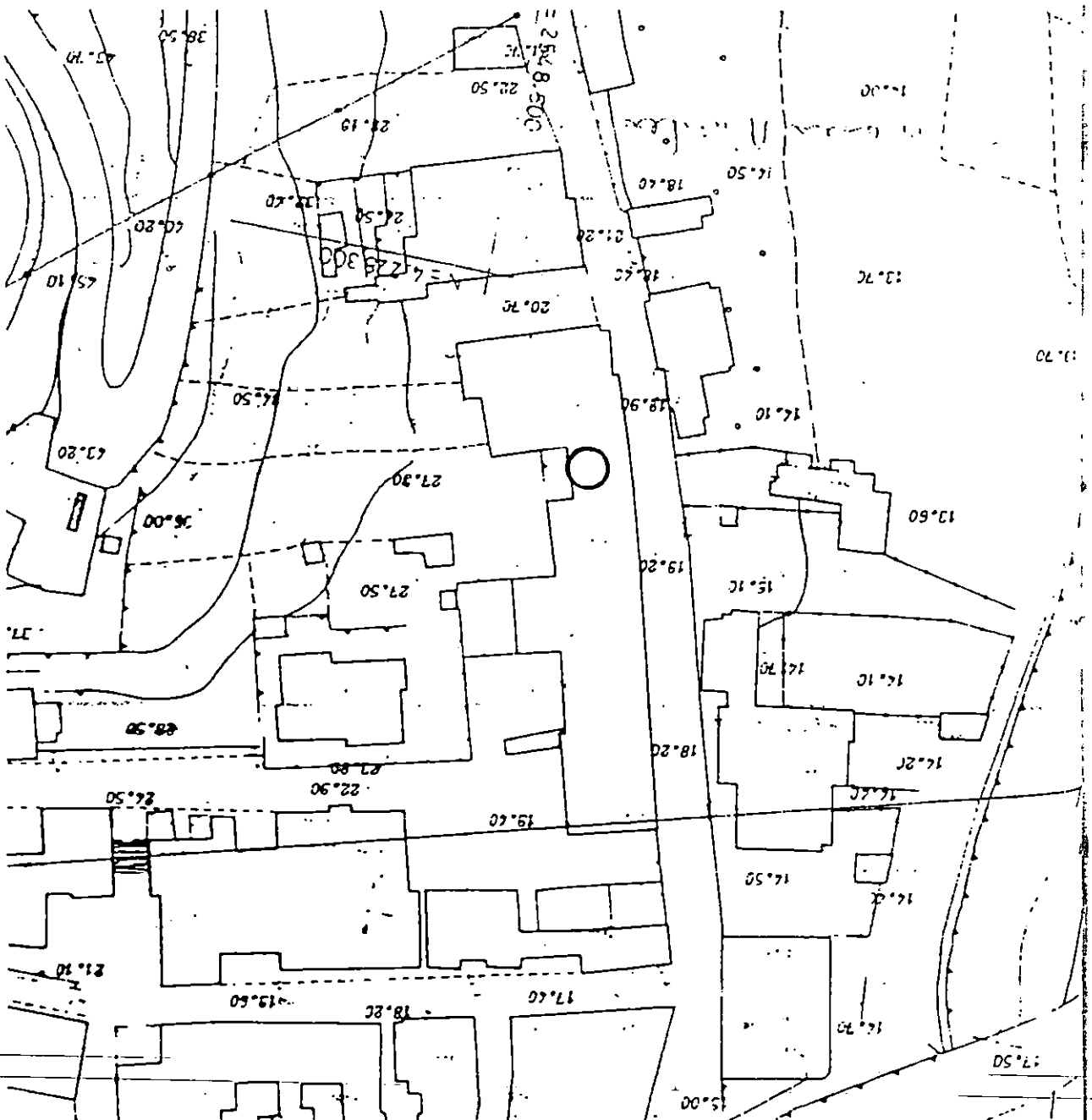


## Descrizione:

0,00 - 2,50 Copertura eluvio-detritica  
 2,50 - Alternanza silto-argillosa

Rapp. 1:1000

○ Area d'intervento





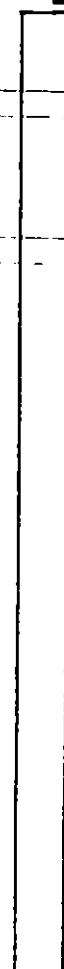
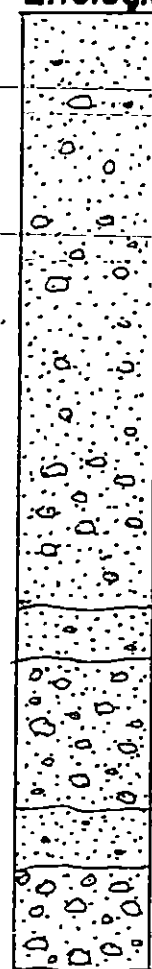
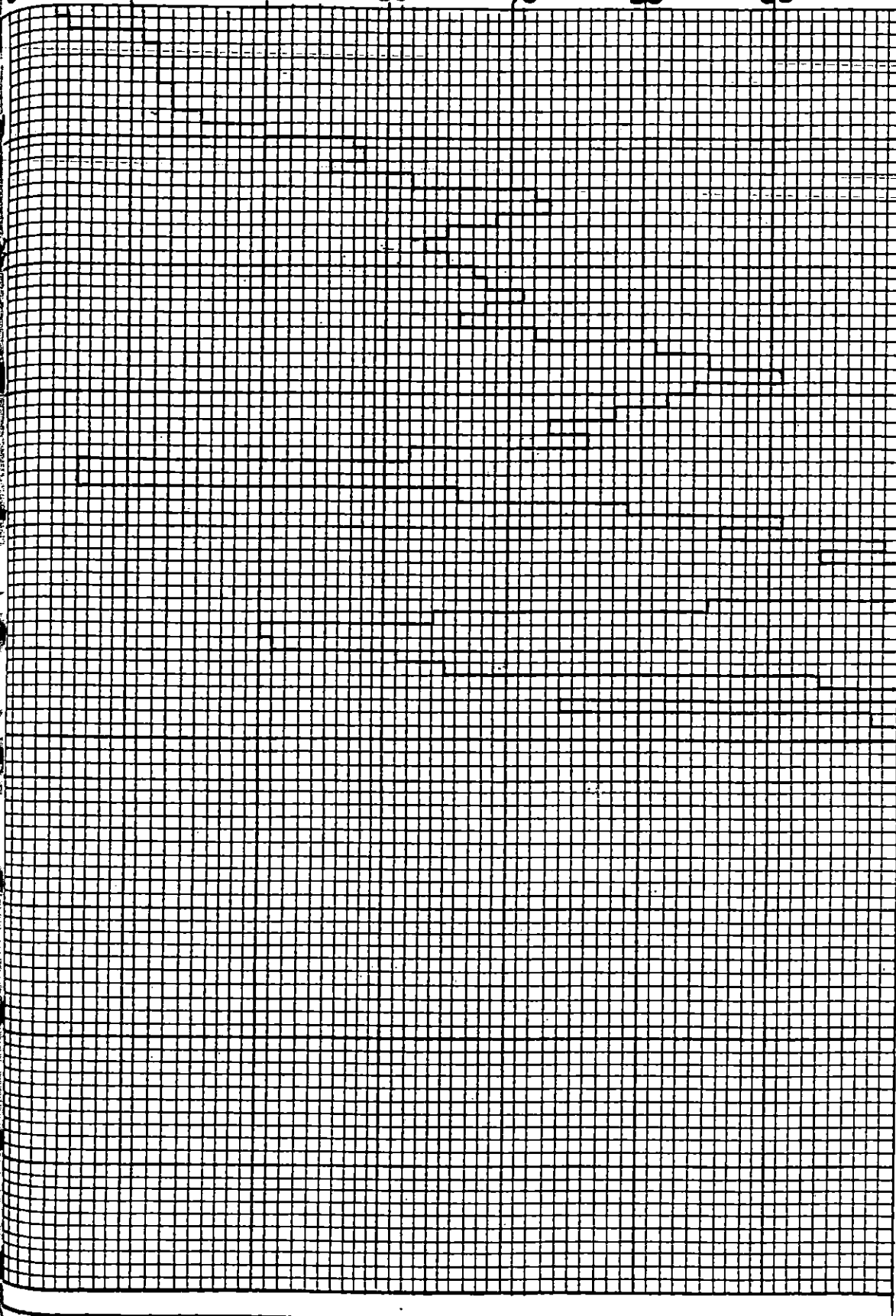
DLO30 →

# DYNAMIC-PENETROMETER TEST

P<sub>1</sub>

0 10 20 30 40 50 60

Litologia H<sub>2</sub>O



Descrizione :

00-5,70 Ghiaia sabbiosa con livelli di sabbia.

DLO30 →

# DYNAMIC-PENETROMETER TEST

P<sub>2</sub>

10

20

30

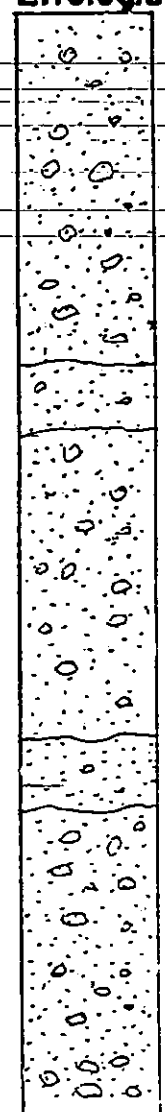
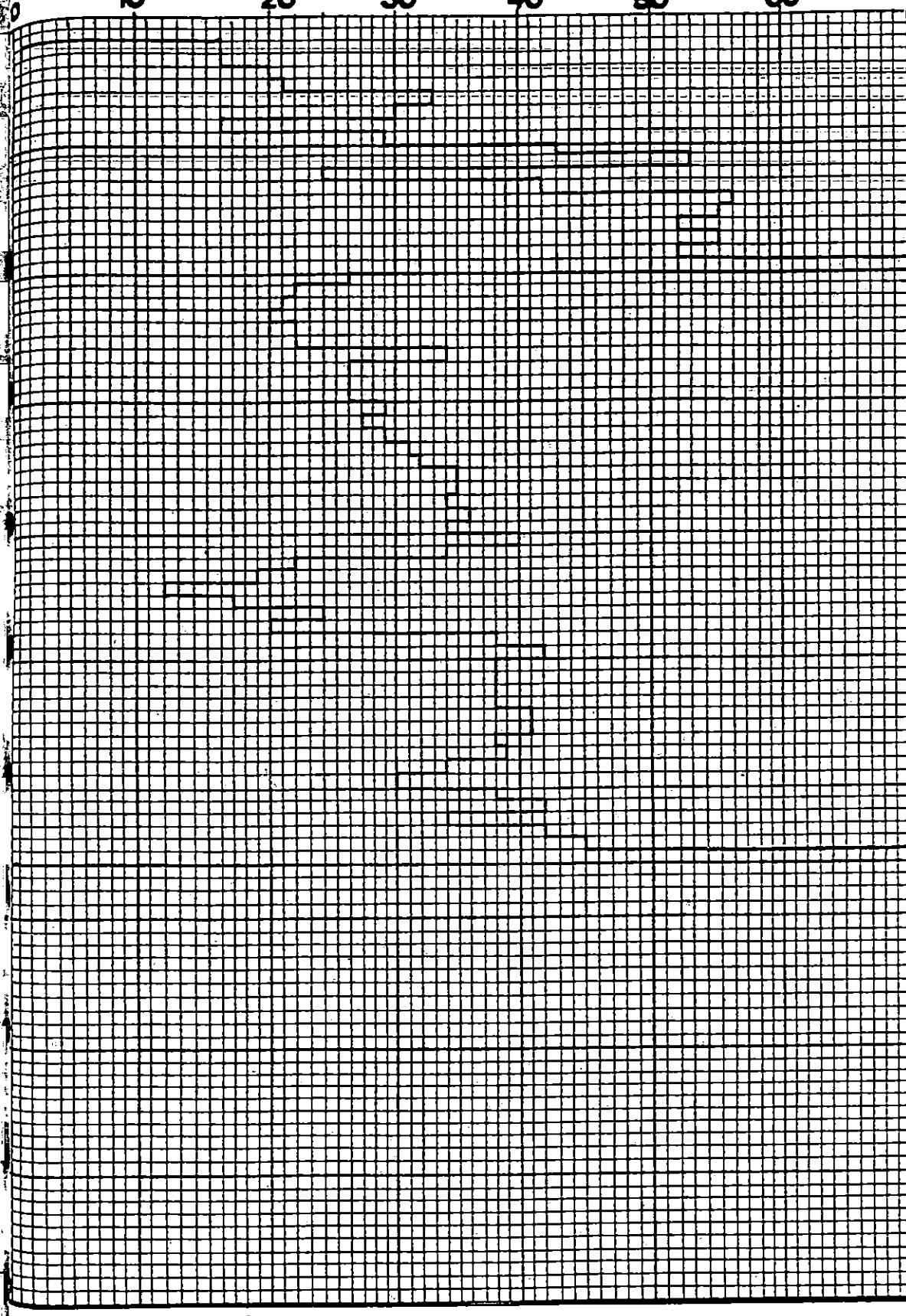
40

50

60

Litologia

H<sub>2</sub>O



Descrizione :

00 - 6,60 Ghiaia sabbiosa con livelli di sabbia.